



# Child Protection & Safeguarding

Policy updated/adapted by:	J Smith
Reviewed by staff:	Sept 2023
Review due:	Sept 2024
Agreed by Headteacher:	N Anderson
Ratified by Management Committee:	
<b>Generic policy was written by Julie Chapaneri and Mohammed Patel (Safeguarding in Education Officers)</b>	



This page is left intentionally blank.



## Contents Page

	<b>Page</b>
Introduction	7
Overall Aims	9
Key Processes	9
Expectations <ul style="list-style-type: none"> <li>● Staff &amp; Visitors</li> <li>● Statement for Parents/Carers</li> <li>● Extended School Activities</li> </ul>	10 10 11 11
Procedures	11
Responsibilities <ul style="list-style-type: none"> <li>● Designated Safeguarding Lead</li> <li>● Headteacher</li> <li>● Management Committee</li> <li>● Supporting Children</li> <li>● Confidentiality</li> <li>● Supporting Staff</li> </ul>	13 13 17 18 20 21 22
Allegations Against Staff	22
Whistleblowing	24
Preventing Abuse	24
Policy Specifics <ul style="list-style-type: none"> <li>● Contextual Safeguarding &amp; Child Criminal Exploitation</li> <li>● County Lines</li> <li>● Serious Crime, Gang Violence &amp; Youth Violence</li> <li>● Knife Crime</li> <li>● Child Criminal Exploitation (CCE) and Cybercrime Involvement</li> <li>● Child Criminal Exploitation and Child Sexual Exploitation (CSE)</li> <li>● Modern Slavery &amp; Trafficking</li> <li>● Child on Child Sexual Violence &amp; Harassment/Child on Child Influence</li> <li>● Children and the Court System</li> <li>● Children with family members in prison</li> <li>● Homelessness</li> <li>● Young Carers</li> </ul>	25 26 27 28 28 28 29 29 30 30 31 31 32
Other forms of abuse and neglect <ul style="list-style-type: none"> <li>● Child Sexual Exploitation &amp; Trafficking</li> <li>● Grooming &amp; Sharing Nudes &amp; Semi-Nudes</li> <li>● Sexual Violence, Sexual Harassment &amp; Child on Child Abuse</li> <li>● Upskirting</li> <li>● Domestic Violence &amp; Domestic Violence between young people</li> <li>● Child Missing from Education / Absent from Education</li> <li>● Honour Based Abuse</li> <li>● Female Genital Mutilation</li> <li>● Forced Marriage</li> <li>● Abuse linked to Faith, Beliefs and Culture</li> <li>● Early Help</li> <li>● Bullying and Safeguarding/The Law</li> </ul>	33 33 34 35 37 38 39 40 40 41 42 43 43



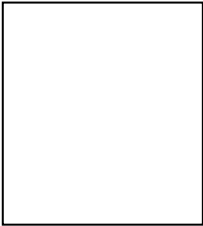
Our Local Priorities	44
Private Fostering	44
Online Safety	45
Monitoring and Filtering	46
Use of school or college premises for non school/college activities	47
What to do when we are concerned	47
Policy Review	48
Other Relevant policies in school	48
Useful contacts	50
Appendices	
Appendix 1 - Definition & Indicators of abuse	52
Appendix 2 - Procedures if you're concerned about a child	60
Appendix 3 - Procedures - Avoiding allegations of abuse for Staff/Volunteers	62
Appendix 4- Indicators of vulnerability to radicalisation	64
Appendix 5 – Whistleblowing policy	66
Appendix 6 – Monitoring and Filtering, Online Safety and Cyber Crime	72



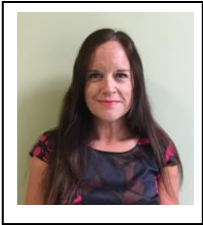
## Safeguarding staff members of Leicester City Primary PRU



Bruce Wells – Chair of Governors



Julie Chapaneri - Safeguarding Governor



Nicola Anderson – Designated Safeguarding Lead



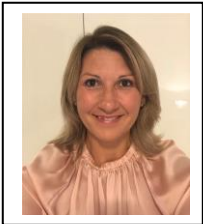
Zaheera Omar-Davies – Deputy Designated Safeguarding Lead



Mairead Richards – Deputy Designated Safeguarding Lead



Eleanor Blockley – Deputy Designated Safeguarding Lead



Jane Smith – Deputy Designated Safeguarding Lead



### **Additional named members of staff**

**Zaheera Omar-Davies** – Designated Teacher for Looked After Children

**Jane Smith** – Designated Teacher for Mental Health & Wellbeing

**Mairead Richard** – Designated Teacher for SEND

**Jude Atkinson** – Local Authority Designated Officer

**Mohammed Patel** – Attendance Officer / Welfare Officer



## 1 Introduction

1.1 Leicester City Primary PRU fully recognises the contribution it can make to protect children and support pupils in school. Safeguarding and promoting the welfare of children is **everyone's** responsibility. Everyone who comes into contact with children and their families has a role to play. To fulfil this responsibility effectively, all professionals should make sure their approach is child-centred. Our establishment has a culture of vigilance, and we take a whole school approach to safeguarding and promoting the welfare of children and we consider, at all times, what is in the best interest of the child or young person. We endeavour to identify concerns early, provide help for children, promote children's welfare, take into consideration the child's lived experience and prevent concerns from escalating.

The aim of this policy is to safeguard and promote our pupil's welfare, safety and health by fostering an honest, open, caring and supportive climate and our staff members working with pupils to maintain an attitude of '**it could happen here**' where safeguarding is concerned. This policy sets out how the school and the governing body discharges its statutory responsibilities relating to safeguarding and promoting the welfare of children who are pupils at the school.

Safeguarding and promoting welfare of children is defined as:

- Protecting children from maltreatment;
- Preventing impairment of children's mental and physical health or development;
- Ensuring that children are growing up in circumstances consistent with the provision of safe and effective care; and
- Taking action to enable all children to have the best life chances.

1.2 No single practitioner can have a full picture of a child's needs and circumstances. If children and families are to receive the right help at the right time, **everyone** who comes into contact with them has a role to play in identifying concerns, sharing information and taking prompt action. **Leicester City Primary PRU** is committed to safeguarding and promoting the welfare of all its students and. We believe that:

- All children/young people have the right to be protected from harm &
- Children/young people need to be safe and to feel safe in school;
- This means our staff consider, at all times, what is in the best interest of the children/ young people
- Children/young people need support which matches their individual needs, including those who may have experienced abuse;
- All children/young people have the right to speak freely and voice their values and beliefs;
- All children/young people must be encouraged to respect each other's values and support each other;
- All children/young people have the right to be supported to meet their emotional, and social needs as well as their educational needs – a happy healthy sociable child/young person will achieve better educationally;



- The staff within our school are prepared to identify children and young people who may benefit from Early Help intervention
- Schools can and do contribute to the prevention of abuse, victimisation, bullying, exploitation, extreme behaviours, discriminatory views and risk taking behaviours; and
- All staff and visitors have an important role to play in safeguarding children and protecting them from abuse.

1.3 Leicester City Primary PRU will fulfil local and national responsibilities and accepted best practice as laid out in the following documents:-

- Working Together to Safeguard Children 2018 (Rev Dec 2020)
- Keeping Children Safe in Education: Statutory guidance for schools and colleges (DfE Sept 2023)
- 'What To Do If You Are Worried A Child Is Being Abused' March 2015
- Education and Training (Welfare of Children) Act 2021
- Sexual Violence and Sexual Harassment between children in schools and colleges (DfE Sept 2021)
- The School Staffing (England) Regulations 2009 & Amended Regulations 2015; Safer Recruitment in Education including
- Guidance for Safer Working Practice 2019 (Rev Apr 2020) Safer Recruitment consortium
- Prevent Duty 2015
- Information sharing: Advice for Practitioners providing safeguarding services to children, young people parents and carers. (March 2015)
- Leicester Safeguarding Children's Partnership Board (LSCPb)
- The Children Act 1989 and 2004
- The Education Act 2002 s175/s157
- Mental Health and Behaviour in Schools: Departmental Advice (DfE 2014)
- Framework for the Assessment of Children in Need and their Families 2000
- Sexual Offences Act 2003 (Position of Trust offence)
- Voyeurism (Offences Act) 2019
- Childcare (Disqualification) Regulations 2009
- Counter Terrorism and Security Act 2015
- Female Genital mutilation Act 2003/Updated regulations July 2020
- Safeguarding & Child Protection education procedures in Leicester, notes, information, and training for Designated Safeguarding Leads (DSL) in schools
- Children and Families Act 2014
- Safeguarding and Vulnerable Group Act 2006
- Sharing Nudes and Semi Nudes (December 2020) – UK Council for Internet Safety
- Searching, Screening & Confiscation at school (Rev July 2022)

1.4 The Governing Body takes seriously its responsibility under section 175 of the Education Act 2002 to safeguard and promote the welfare of children; and to work together with other





agencies to ensure adequate arrangements within our school to identify, assess, and support those children who are suffering harm.

1.5 We recognise that all staff and governors have a full and active part to play in protecting our pupils from harm, and that the child's welfare is our paramount concern.

1.6 All staff<sup>1</sup> believe that our school should provide a caring, positive, safe and stimulating environment that promotes the social, physical and moral development of the individual child.

## 2 Overall Aims

- This policy will contribute to safeguarding our students and promoting their welfare and mental health by supporting the child's development in ways that will foster security, confidence and resilience at the same time considering the best interest of the child.
- Providing an environment in which children and young people feel safe, secure, valued and respected, feel confident and know how to approach adults if they are in difficulties
- Raising the awareness of all teaching and non-teaching staff of the need to safeguard children and of their responsibilities in identifying and reporting possible cases of abuse.
- Ensure our staff identify concerns early, provide help for children, promote children's welfare and prevent concerns from escalating.
- Providing a systematic means of monitoring children known or thought to be at risk of harm, and ensure we, the school, contribute to assessments of need and support plans for those children including Child Missing / Absent from Education.
- Acknowledging the need for effective and appropriate communication between all members of staff in relation to safeguarding pupils.
- Developing a structured procedure within the school which will be followed by all members of the school community in cases of suspected abuse.
- Developing effective working relationships with all other agencies involved in safeguarding children including Early Help and intervention
- Work within the curriculum raising awareness of and promoting safeguarding, on and off line, to our children/young people people including e-safety and online safety inside and outside of establishment.
- Ensuring that all adults within our school who have access to children have been checked as to their suitability. This includes other community users of our facilities.

## 3 Key processes

Where a child is suffering, or is likely to suffer from harm, it is important that a referral to local authority children's social care (and if appropriate the police) is made immediately. Our school procedures for safeguarding children are in line with the Leicester City Safeguarding Children's

---

<sup>1</sup> 'Staff' Covers ALL adult staff on site, including temporary, supply and ancillary staff, and volunteers working with children



Board (LSCP), Multi Agency Child Protection/Safeguarding Procedures; (<https://lrs.cb.proceduresonline.com/index.htm>), in addition to the statutory requirements as outlined in 1.3.

## 4 Expectations

### 4.1 All staff and visitors will be familiar with this safeguarding policy;

- Staff will have access to, a copy of, and be well versed in our Child Protection Policy; which will also form part of their induction and revisited annually through Whole School Safeguarding Training.
- Be subject to Safer Recruitment processes and checks, whether they are new staff, supply staff, contractors, volunteers etc;
- For those regular external visitors/providers such as cleaners and caterers; to have shown the school a copy of their H & S and Child Protection Guidelines as best practice and where applicable; and that the school has a statement in main reception notifying external visitors who the Schools DSL is and what to do if they have any concerns about a child's welfare
- Be involved in the implementation of individual education programmes, integrated support plans, child in need plans and interagency child protection plans;
- Be alert to signs and indicators of possible abuse (See Appendix 1)
- Staff understand that 'harm' can include 'witnessing harm to others', for example cases of domestic abuse;
- Record concerns/disclosures and give the record to the DSL; and
- Deal with a disclosure of abuse from a child in line with our school procedures; informing the DSL immediately, and provide a written account as soon as possible. This includes making the appropriate contact with children's social care (DSL).
- Record safeguarding information using school procedures whether electronic (CPOMS) or in paper form

### 4.2 Reporting concerns

In our school, if a staff member or visitor need to make a referral to our DSL's, these are the steps we follow:

- Staff members are to add all information to CPOMS;
- Staff and visitors are to complete a pink safeguarding form with any relevant information as soon as possible and pass this to one of the 5 DSL's to action;
- The wider community, along with school staff can also email [safeguarding@pru.leicester.sch.uk](mailto:safeguarding@pru.leicester.sch.uk) with any concerns;
- including notifying parents of changes within the document ie revised annual policy.



### 4.3 All parents will be familiar with this safeguarding policy;

- Parents/Cares will have access to the Child Protection Policy as part of initial information given to perspective/existing Parents/Carers and will be available through our school's website. Additional copies will be issued as and when required including notifying parents of changes within the document, ie revised annual policy.
- Parents and carers have the responsibility to inform the school if a child in their care is a young carer. Our establishment understands the stigma for some parents and carers in raising this, however, we are an inclusive school, and every effort will be made to support the child and family with this. See point 27 of this policy for further information.

### 4.4 Communicating with parents:

In addition to section 4.2 above, the following statement is provided and highlighted to parents so they are aware of the school's responsibilities:

'Our school ensures children learn in a safe, caring and enriching environment. Children are taught how to keep themselves safe, on and off line, to develop positive and healthy relationships and how to avoid situations where they might be at risk including by being exploited.

**Our school has a statutory responsibility** to share any concerns it might have about a child in need of protection with other agencies and in particular police, health and children's services. Schools are not able to investigate concerns but have a legal duty to refer them. In most instances, the school will be able to inform the parents/carer of its need to make a referral. However, sometimes the school is advised by Children's Social Care or police that the parent/carer cannot be informed whilst they investigate the matter. We understand the anxiety parents/carers understandably feel when they are not told about any concerns from the outset. The school follows legislation that aims to act in the best interests of the child.

## 5 Extended school and before and after school activities

5.1 Where the governing body provides services or activities directly under the supervision or management of school staff, the school's arrangements for child protection will apply.

5.2 Where services or activities are provided separately by another body, the governing body should seek assurance in writing that the body concerned has appropriate policies and procedures in place to safeguard and protect children and there are arrangements to liaise with the school on these matters where appropriate

## 6 Procedures

6.1 Leicester City Primary PRU will ensure that:



- The governing body understands and fulfils its safeguarding responsibilities.
- We have a Designated Safeguarding Lead and a Deputy Designated Safeguarding Lead for child protection and safeguarding, who have undertaken DSL training delivered by Safeguarding in Education, Leicester City Council; of which their training will be refreshed every two years.
- All members of staff are provided with opportunities **annually** to receive Safeguarding Training by the Safeguarding in Education team in order to develop their understanding of safeguarding and child protection in particular the signs and indicators of abuse.
- All members of staff, volunteers, and governors know how to respond to a pupil who discloses abuse, and the procedure to be followed in appropriately sharing a concern of possible abuse or a disclosure of abuse.
- All parents/carers are made aware of the school's responsibilities in regard to child protection procedures through publication of the school's Safeguarding and Child Protection Policy, and reference to it in our prospectus/brochure and home school agreement.
- Community users organising activities for children are aware of and understand the need for compliance with the school's child protection guidelines and procedures.
- Leicester City Primary PRU is committed to safer recruitment as outlined in Keeping Children Safe In Education 2023. The school will ensure all appropriate checks are carried out for all staff and volunteers including online searches as part of due diligence. Appropriate checks will be recorded on the Single Central Record which will be audited termly by the school Business Manager (**Richard Scowen**). The school will ensure at least one person who is safer recruitment trained will be part of the recruitment process. See also the Safer Recruitment policy & guidance.
- All governors / proprietors / trustees will undergo a DBS check and a S128 / Section 128 direction check as outlined in Keeping Children Safe in Education 2023.
- The name of any member of staff considered not suitable to work with children will be notified to either the Disclosure and Barring Service or the relevant Government Department/Agency (where appropriate), depending on the nature of the concern, with the advice and support of the Local Authority Designated Officer (LADO), and that a member of our SLT has attended LADO training (Managing allegations against staff members) and understands the harms threshold / low level concerns thresholds as set out in KCSIE 2023.
- Our procedures will be annually reviewed and up-dated and ratified by the Governing Body / Proprietors / Trustees.
- The name of the Designated Safeguarding Lead and Deputy Designated Safeguarding Lead will be clearly shown in the school, with a statement explaining the school's role in referring and monitoring cases of suspected abuse. (Reception, Staff room, Website etc.).
- All adults, (including supply teachers, non-teaching staff and volunteers), new to our school will be given or directed to a copy of; our Safeguarding and Child Protection Policy, Staff Code of Conduct, the school's behaviour policy, the school's child missing protocols, the booklet 'What To Do if You're Worried A Child is Being Abused'<sup>2</sup>, Keeping Children Safe in Education 2023 Part 1, 5 and Annex B & C<sup>3</sup>, and the name and contact details of the

---

<sup>2</sup>[https://www.gov.uk/government/uploads/system/uploads/attachment\\_data/file/419604/What\\_to\\_do\\_if\\_you\\_re\\_worried\\_a\\_child\\_is\\_being\\_abused.pdf](https://www.gov.uk/government/uploads/system/uploads/attachment_data/file/419604/What_to_do_if_you_re_worried_a_child_is_being_abused.pdf)

<sup>3</sup>[https://assets.publishing.service.gov.uk/government/uploads/system/uploads/attachment\\_data/file/1021914/KCSIE\\_2021\\_September\\_guidance.pdf](https://assets.publishing.service.gov.uk/government/uploads/system/uploads/attachment_data/file/1021914/KCSIE_2021_September_guidance.pdf)



Designated Safeguarding Lead will be explained as part of their induction into the school. In addition to this, all such staff and volunteers will be made aware of the 'Guidance for safer working practice for those working with children and young people in education settings, 2020 (Safer Recruitment Consortium).<sup>4</sup>

## 7 Responsibilities

7.1 All our staff are aware that children may not feel ready or know how to tell someone that they are being abused, exploited, or neglected, and/or they may not recognise their experiences as harmful. For example, children may feel embarrassed, humiliated, or being threatened. This could be due to their vulnerability, disability and/or sexual orientation or language barriers. This will not prevent our staff from having a professional curiosity and speaking to the DSL(s) if they have concerns about a child. Our staff will also determine how best to build trusted relationships with children and young people which facilitate communication.

We understand that our responsibility to safeguard children requires that we all appropriately share any concerns as soon as a staff member or volunteer suspects/knows of a concern that we may have about children. The first point of contact is the DSL or other members of the Safeguarding Team (in their absence). The DSL will inform the Headteacher of any referrals to be made. If the concerns is in regards to the conduct of a staff member the report is made to the Headteacher. If the concerns is regarding the Headteacher then the Chair of Governors should be informed.

7.2 If a staff member feels they cannot disclose information to their DSL, Headteacher or Governor(s), they must then follow our school's whistleblowing procedures to report their concerns.

7.3 All staff will be versed in our Whistleblowing procedure, understand when it is appropriate to use the procedures and will be given details of the NSPCC whistleblowing helpline.

7.4 All staff will be well versed in the school's Child Missing protocols and know and understand that any child that is regularly absent or missing can be a cause for concern and a possible indicator that the child is at risk of abuse or in need of help and support. Please refer to our Child Missing / Absent from Education document.

## 8 Designated Safeguarding Lead (DSL) – Roles and Responsibilities<sup>5</sup>

8.1 Keeping Children Safe in Education September 2023, Annex C, outlines specific responsibilities of the DSL (A member of the School's Leadership Team) and their responsibilities within this role. Our lead DSL will take lead responsibility for safeguarding and child protection (including online safety). This is also explicit in their job description. We also have a number of

---

<sup>4</sup> <https://saferrecruitmentconsortium.org/>

<sup>5</sup> [https://assets.publishing.service.gov.uk/government/uploads/system/uploads/attachment\\_data/file/1014057/KCSIE\\_2021\\_September.pdf](https://assets.publishing.service.gov.uk/government/uploads/system/uploads/attachment_data/file/1014057/KCSIE_2021_September.pdf) - Annex C, Role of Designated Safeguarding Lead



deputy designated safeguarding leads who are trained to the same standard and provide the same level of support. Their key areas of responsibilities include:-

### **Manage Referrals:**

- Refer cases of suspected abuse and neglect to children's social care/police
- Support staff who make referrals to local authority
- The Channel programme where there is a radicalisation concern and support staff with this
- Cases in relation to allegations against staff members to LADO including disclosure and barring
- Cases where any crime may have been committed to the Police

### **Work with Others:**

- Act as a source of support, advice and expertise for staff.
- Act as a point of contact with the safeguarding partners.
- Liaise with the Headteacher or principal to inform him or her of issues especially ongoing enquiries under section 47 of the Children Act 1989 and police investigations. This should include being aware of the requirement for children to have an Appropriate Adult;
- As required, liaise with the "case manager" (as per Part Four) and the local authority designated officer(s) (LADO) for child protection concerns in cases which concern a staff member.
- Liaise with staff (especially teachers, pastoral support staff, school nurses, IT Technicians, senior mental health leads and special educational needs co-ordinators (SENCOs), or the named person with oversight for SEN in a college and Senior Mental Health Leads on matters of safety and welfare (including online and digital safety) and when deciding whether to make a referral by liaising with relevant agencies so that children's needs are considered holistically.
- Liaise with the Senior Mental Health Lead and, where available, the Mental Health Support Team, where safeguarding concerns are linked to mental health.
- Promote supportive engagement with parents and/or carers in safeguarding and promoting the welfare children, including where families may be facing challenging circumstances.
- Work with the Headteacher and relevant strategic leads, taking responsibility for promoting educational outcomes by knowing the welfare, safeguarding and child protection issues that children in need are experiencing, or have experienced, and identifying the impact that these issues might be having on children's attendance, engagement and achievement at school or college. This includes:
  - Ensuring that the school or college knows who its cohort of children who have or have had a social worker are, understanding their academic progress and attainment, and maintaining a culture of high aspirations for this cohort; and
  - Supporting teaching staff to provide additional academic support or reasonable adjustments to help children who have or have had a social worker reach their potential, recognising that even when statutory social care intervention has ended, there is still a lasting impact on children's educational outcomes.

### **Information sharing and managing child protection files**



Our DSL(s) are responsible for ensuring that our children protection files are kept up to date. The information is kept confidential and stored securely. Our records will contain the following information:

- A clear and comprehensive summary of the concern
- Details of how the concern was followed up and resolved
- A note of any action taken, decisions reached and the outcome
- Transfer child protection files (including in year transfers) to the new school or college as soon as possible, and within 5 days for an in-year transfer or within the first 5 days of the start of a new term, ensuring secure transit and confirmation of receipt will be obtained.

Our DSL(s) will ensure the file is only accessed by those who need to see it and where the file or its contents are shared, this happens in line with information sharing advice outlined in government guidance KCSIE 2023.

### **Raise Awareness:**

- Ensure each member of staff (new and part-time) has access to and understands our child protection policy and procedures
- Ensure our child protection policy is reviewed annually, updated, and reviewed regularly, and work with our governing body / proprietors regarding this
- Ensure our child protection policy is available publicly, and parents are aware of the fact that referrals about suspected abuse or neglect may be made and the role of the school in this (section 4.4 above)
- Link with the safeguarding partners to make sure staff are aware of training opportunities and the latest local policies on local safeguarding arrangements
- Help promote educational outcomes by sharing information about the welfare, safeguarding and child protection issues that children, including those with a social worker are experiencing, with teachers and school and college leadership staff.

### **Training Knowledge and Skills**

- Understand the assessment process for providing early help and statutory intervention, and social care referral arrangements
- Have a working knowledge of how local authorities conduct a child protection case conference/review conference and attend to these effectively
- Understand the importance DSL(s) has in providing information and support to children social care in order to safeguard and promote the welfare of children
- Understand the lasting impact that adversity and trauma can have, including on children's behaviour, mental health and wellbeing, and what is needed in responding to this in promoting educational outcomes
- Are alert to the specific needs of children in need, those with special educational needs and disabilities (SEND), those with relevant health conditions and young carers
- Understand the importance of information sharing, both within the school and college, and with the safeguarding partners, other agencies, organisations and practitioners
- Understand and support the school or college staff with regards to the requirements of the Prevent duty and protecting children from the risk of radicalisation;



- Are able to understand the unique risks associated with online safety, including filtering and monitoring, and be confident to keep children safe whilst they are online at school or college
- Recognise additional risks that children with (SEND) face online, for example, from online bullying, grooming and radicalisation and are confident they have the capability to support children with SEND to stay safe online
- Obtain access to resources and attend any relevant or refresher training courses
- Encourage a culture of listening to children and taking account of their wishes and feelings, among all staff, in any measures the school or college may put in place to protect them.

In addition to the formal training set out above, our DSL(s) knowledge and skills are regularly at regular intervals to allow them to understand and keep up to date with any developments relevant to their role.

### **Providing support to staff**

- Ensure our staff are supported during the referrals processes
- Support staff to consider how safeguarding, welfare and educational outcomes are linked, including to inform the provision of academic and pastoral support

### **Understanding the views of children**

It is important that children feel heard and understood. Therefore, our DSL(s) designated safeguarding leads will be supported in developing knowledge and skills to:

- Encourage a culture of listening to children and taking account of their wishes and feelings, among all staff, and in any measures the school or college may put in place to protect them
- Understand the difficulties that children may have in approaching staff about their circumstances and consider how to build trusted relationships which facilitate communication

### **Holding and sharing Information**

Our DSL(s) will be equipped to:

- Understand the importance of information sharing, both within the school and college, and with other schools and colleges on transfer including in-year and between primary and secondary education, and with the safeguarding partners, other agencies, organisations and practitioners
- Understand relevant data protection legislation and regulations, especially the Data Protection Act 2018 and the UK General Data Protection Regulation (UKGDPR)
- Be able to keep detailed, accurate, secure written records of concerns and referrals and understand the purpose of this record-keeping

### **Availability**

- During term time, our DSL(s) will always be available on school site. The school will arrange adequate and appropriate cover arrangements for any out of hours/out of term activities and trips and in exceptional circumstances, availability will be made via mobile phone and or Skype





## 8.2 Roles and responsibilities of the Headteacher

The Headteacher of Leicester City Primary PRU will ensure that:

- The policies and procedures adopted by the governing body/ proprietors/ trustees are fully implemented, and followed by all staff:
- Specifically, the Safeguarding & Child Protection Policy, Behaviour policy, Staff Code of Conduct, LADO procedures, child on child Abuse/Sexualised Behaviour policy, Safer Recruitment policy and other relevant policies are updated annually, ratified by the Governing body proprietors/ trustees annually and that relevant policies are available publicly either via the school website, parents evening, open days or by other means.
- That staff undergo and attend annual Whole School Safeguarding Training (INSET)
- That all staff undergo appropriate online safety training
- That all staff receive regular updates in relation to safeguarding, child protection and online safety
- Sufficient resources and time are allocated to enable DSL's and other staff to discharge their responsibilities; including taking part in inter-agency meetings and contributing to the assessment of children.
- That the Headteacher is aware of the Local Authority Designated Officer (LADO) processes regarding allegations about other staff members, specifically the 'harms' and 'low-level concerns' thresholds
- That the Headteacher has attended LADO training and refreshed no later than every 2 years
- That the Headteacher has attended Safer Recruitment Training and that training is refreshed no later than every 5 years; and that at least 1 member of the Governing body proprietors/ trustees has attended Safer Recruitment Training.
- All staff and volunteers feel able to raise concerns about poor or unsafe practice in regard to children, and such concerns are addressed sensitively and effectively in a timely manner. (Whole school approach, child centred practice and culture of vigilance)
- All staff consider the best interest of a child and are made aware that they have an individual responsibility for referring child protection concerns, promptly and using the proper channels.
- All staff have an understanding of Early Help and have the ability to identify children who would benefit from Early Help intervention.
- That regular external visitors/providers such as cleaners, caterers have shown the school a copy of their H & S and Child Protection guidelines as best practice and where applicable; and that the school has a statement in main reception notifying external visitors who the Schools DSL(s) are and what to do if they have any concerns about a child's welfare
- The DSL's undergo safeguarding and child protection training which is updated regularly, with advice from the LSCP, Safeguarding in Education and in line with Keeping Children Safe in Education, September 2023, Annex C
- New members of staff, temporary or permanent including volunteers are given a full induction that includes Safeguarding and Child Protection Guidelines and names of DSL(s).



- All staff are made aware of their right to whistleblow, have a copy of the whistleblowing procedures, are well versed with the procedures and have been made aware of the NSPCC whistleblowing helpline. (Appendix 5).

### 8.3 Roles and responsibilities of the Governing Body / Proprietors/ Trustees

Leicester City Primary PRU Governing body / proprietors have a strategic leadership responsibility for our school's safeguarding arrangements and comply with their duties under legislation. Our governing body ensures policies, procedures and training in our school are effective and comply with the law at all times. Our Governor is **Julie Chapaneri**.

We will also ensure that all our governors and trustees receive appropriate safeguarding and child protection (including online) training at induction. The training will equip them with the knowledge to provide strategic challenge to test and assure themselves that the safeguarding policies and procedures in place in our school are effective and support the delivery of a robust whole school approach to safeguarding. Our governors and trustees training will be regularly updated.

Futhermore, the governors / proprietors / trustees of our school will ensure that:

- Our school has a Safeguarding and Child Protection Policy and procedures in place, and the policy is made available to parents on request and available on the school website [www.pru.leicester.sch.uk](http://www.pru.leicester.sch.uk)
- That all school staff members working with children consider the best interests of children and are advised to maintain an attitude of 'it could happen here' where safeguarding is concerned.
- There is a senior member of the school's leadership team who is designated to take lead responsibility for dealing with safeguarding and child protection, including online safety and the filtering and monitoring systems in place for the establishment (Lead DSL).
- There is an appointed deputy(s) for child protection, in the event of the unavailability of the Lead DSL
- Where there is a safeguarding concern, the governing body / proprietors / trustees / SLT will ensure the child's wishes and feelings are taken into account when determining what action to take and what services to provide for them
- That systems are in place, well promoted, easily understood and easily accessible for children to confidently report abuse, knowing their concerns will be treated seriously, and knowing they can safely express their views and give feedback.
- The DSL and the appointed deputy(s) for child protection undertakes training for designated safeguarding leads, in addition to inter-agency child protection training, that is provided by, or to standards agreed by, LSCP, and attends refresher DSL training at two-yearly intervals
- That clear systems and processes are in place for identifying and responding to potential mental health problems to a child including routes to escalate, referrals and accountability systems



- The Headteacher, and all other staff and volunteers who work with children, undertake appropriate training which is kept up-to-date through Whole School Training (annually); and that new staff, temporary staff and volunteers who work with children are made aware of the school's arrangements for child protection and their responsibilities. (Through the induction process)
- The Headteacher, and all other staff and volunteers who work with children, undertake appropriate online safety training
- There are procedures for dealing with allegations of abuse against members of staff and volunteers (LADO) and that the thresholds for allegations (harms thresholds/low level concerns) against staff and volunteers are understood and reported appropriately by all staff members (Appendix 4)
- The Staff Code of Conduct is up to date, maintained and adhered to by staff so as not to bring the school into disrepute
- The chair of governors/ proprietors/ trustees (or, in the absence of a chair, the vice chair) deals with any allegations of abuse made against the Headteacher, in liaison with the Local Authority Designated Officer. (Appendix 4)
- That at least 1 member of the governing body has attended LADO training as a minimum and is refreshed regularly
- That at least 1 member of the governing body has attended Safer Recruitment training as a minimum and is refreshed regularly
- The governing body / proprietors/ trustees nor individual governors / trustees will have a role in dealing with individual cases or a right to details of cases except when exercising their disciplinary functions in respect of allegations against a member of staff
- Any deficiencies or weaknesses brought to the attention of the governing body / proprietors/ trustees are rectified.
- Policies and procedures are reviewed annually, and information is provided to the Local Authority on how the governing body / proprietors/ trustees discharges its duties regarding safeguarding and child protection.
- There is an individual member of the governing body / proprietors/ trustees who will champion and lead on issues to do with safeguarding children and child protection within the school, liaise with the DSL, and provide information and reports to the governing body / proprietors/ trustees, and that person is appropriately trained to discharge their responsibilities effectively. Our schools Lead Governor for Safeguarding is **Julie Chapaneri**.
- Will ensure that school creates a culture of safe recruitment and, as part of that, adopts recruitment procedures that help deter, reject or identify people who might abuse children (Part three: Safer Recruitment, Keeping Children Safe in Education September 2023).
- That the Chair of the governing body / proprietors/ trustees completes the annual Safeguarding Return – supporting schools to exercise their duties in relation to Safeguarding & Child Protection and return the document to the local authority in a timely manner.
- That there is a Lead Governor for Antbullying and Behaviour in the school. Our Lead is **Jessica Nicholls**.
- That there is a Lead Governor for Mental Health in the school. Our Lead is **Richard Hall**.



Our governing body will ensure they facilitate a whole school approach to safeguarding. This means ensuring safeguarding and children protection are at the forefront and underpin all relevant aspects of process and policy development. Ultimately, all systems, processes and policies will operate with the best interests of the child at heart.

## 9 Supporting Children

Some children may need a social worker due to safeguarding or welfare needs. Children may need this help for various reasons and their experiences of trauma and abuse can lead them to becoming more vulnerable or educationally disadvantaged. When receiving information from the Local Authority that a child has a social worker, our DSL will use this information so that decisions can be made in the best interest of a child's safety and welfare, as routine. Our DSL, where appropriate, will share information accordingly with relevant partner agencies to safeguard and promote the physical and mental health wellbeing of any child. In addition to this;

- We recognise that a child who is abused, who witnesses violence or who lives in a violent environment may feel helpless and humiliated, may blame him/herself, and find it difficult to develop and maintain a sense of self-worth
- We recognise that the school may provide the only stability in the lives of children who have been abused or who are at risk of harm
- We accept that research shows that the behaviour of a child in these circumstances may range from that which is perceived to be normal, too aggressive or being withdrawn

### 9.1 Our school will support all students by:

- Ensuring that a child's wishes and feelings are taken into account when determining what action to take and what services to provide when dealing with a safeguarding concern
- That systems are in place, well promoted, easily understood and easily accessible for children to confidently report abuse, knowing their concerns will be treated seriously, and knowing they can safely express their views and give feedback.
- Encouraging the development of self-esteem and resilience in every aspect of school life including through the curriculum
- Identifying children who are in need of extra mental health support which includes working with external agencies
- Identifying children who are or maybe Young Carers and providing relevant support and signposting
- Promoting a caring, safe and positive environment within the school
- Ensure children are taught to recognise when they are at risk and know how to get help when they need it. Both, physically, mentally and online.
- Liaising and working together with all other support services and those agencies involved in the safeguarding of children including Early Help
- Notifying Children's Social Care as soon as there is a significant concern



- Ensuring that a named teacher is designated for Looked After Children/Children In Need (LAC & CIN) and that an up to date list of LAC/CIN is regularly reviewed and monitored
- Providing continuing support to a student (about whom there have been concerns) who leaves the school by ensuring that such concerns and school medical records are forwarded under confidential cover to the Head at the pupil's new school as a matter of urgency
- Working with partner agencies to support and safeguard children within; Early Help, Children in Need, Child Protection and Looked After Children
- Our Governors and school staff will ensure that children are taught about how to keep themselves and others safe, including online. We recognise that effective education will be tailored to the specific need and vulnerabilities of individual children, including children who are victims of abuse, and children with special educational needs or disabilities. Aspects include:
  - Healthy and respectful relationships
  - Boundaries and consent
  - Stereotyping, prejudice and equality
  - Body confidence and self-esteem
  - How to recognise an abusive relationship, including coercive and controlling behaviour
  - The concepts of, and laws relating to – sexual consent, sexual exploitation, abuse, grooming, coercion, harassment, rape, domestic abuse, so called honour-based violence such as forced marriage and Female Genital Mutilation (FGM), and how to access support, and
  - What constitutes sexual harassment and sexual violence and why these are always unacceptable.

## 10 Confidentiality

We recognise that all matters relating to child protection are confidential and the best interest of a child should be considered at all times. However, The Data Protection Act 2018 and GDPR do not prevent, or limit, the sharing of information for the purposes of keeping children safe. Fears about sharing information must not be allowed to stand in the way of the need to promote the welfare and protect the safety of children. Our staff and practitioners (may) share information without consent where there is good reason to do so, and that the sharing of information will enhance the safeguarding of a child in a timely manner. *It would be legitimate to share information without consent where: it is not possible to gain consent; it cannot be reasonably expected that a practitioner gains consent; and. If to gain consent would place a child at risk.*

10.1 The Headteacher or DSL will disclose personal information about a pupil to other members of staff on a need to know basis only. Staff will be informed of relevant details only when the DSL feels their having knowledge of a situation will improve their ability to deal with an individual student/family. A written record will be made of what information has been shared, with whom, and when.



10.2 All staff must be aware that they have a professional responsibility to share information with other agencies in order to safeguard children.

10.3 All staff must be aware that they cannot promise a child to keep secrets which might compromise the child's own safety or well-being, or that of another child as this may ultimately not be in the best interest of the child.

10.4 We will always undertake to share our intention to refer a child to Children's Social Care with their parents/carers consent unless to do so could put the child at greater risk of harm, or impede a criminal investigation. If in doubt, we will consult with the Children's Social Care, duty & Advice Service.

## 11 Supporting Staff

11.1 We recognise that staff working in the school who have become involved with a child who has suffered harm, or appears to be likely to suffer harm may find the situation stressful and upsetting.

11.2 We will support such staff by providing an opportunity to talk through their anxieties and concerns with the DSL and to seek further support where necessary. This could be provided by, for example, the Headteacher, by Occupational Health and/or a teacher/trade union representative as appropriate.

11.3 We understand that staff should have access to advice on the boundaries of appropriate behaviour. Guidance for safer working practice for those working with children and young people in education settings, 2019/2020 (Safer Recruitment Consortium).<sup>6</sup> provides advice on this and the circumstances which should be avoided, in order to limit complaints against staff of abuse of trust, and/or allegations of physical or sexual abuse. These matters form part of staff induction and are referred to in the staff code of conduct.

11.4 We recognise that DSL's should have access to support (as in 11.2) and appropriate workshops, courses or meetings as organised or arranged through the Local Authority/LSCP.

## 12 Allegations against staff

12.1 All school staff including supply staff should take care not to place themselves in a vulnerable position with a child. It is always advisable for interviews or work with individual children or parents to be conducted in view of other adults.

---

<sup>6</sup> <https://saferrecruitmentconsortium.org/>



12.2 All staff including supply staff should be aware of the Whole School Behaviour Policy and Staff Code of Conduct

12.3 All staff including supply staff should be aware of the Guidance for Safer Working Practices for Adults who work with Children and Young People 2019/2020<sup>7</sup>

12.4 All staff as part of their annual safeguarding training will receive E Safety Training and will sign the E-Safety Acceptable Use Agreement. This sets out responsibilities for all staff, ensuring they have an up-to-date awareness of e-safety matters and that all digital communications with students/parents/carers should be a professional level and only carried out using official school systems. Further information on this can be found in section 41 and 42 of this policy and Appendix 6.

12.5 We understand that a pupil may make an allegation against a member of staff;

12.6 If such an allegation is made, the member of staff receiving the allegation will immediately inform the Headteacher or the most senior teacher if the Headteacher is not present.

12.7 The Headteacher/senior teacher on all such occasions will immediately discuss the content of the allegation with the Local Authority Designated Officer (LADO) and follow the process for managing the concern laid down in the LSCPB Procedures <https://llrscb.proceduresonline.com/index.htm>. In addition to this, the Headteacher is aware of the harms thresholds and difference between low level concerns and harms as set out in KCSIE 2023 and within the school's Managing Allegations procedures (Appendix 4).

12.8 If the allegation made to a member of staff concerns the Headteacher, the person receiving the allegation will immediately inform the Chair of Governors / trustees who will consult with Children's Social Care, LADO, without notifying the Headteacher first. (0116 454 2440)

12.9 In all occasions identified in 12.7 & 12.8 above, the school will follow the LSCPB/Local Authority procedures for managing allegations against staff and volunteers, a copy of which can be found in the School's Managing Allegations Policy (Appendix 4).

12.10 Suspension of the member of staff against whom an allegation has been made needs careful consideration, and we will consult (as in 12.8 above) in making this decision.

12.11 In line with this policy and other school procedures for incident reporting/recording, staff and pupils may provide accounts of events which will be stored under our own secure systems and may be produced in the event of any allegation. However, such accounts must not constitute an official statement and the reporting person must not be questioned over their disclosure at this stage.

---

<sup>7</sup> <https://saferrecruitmentconsortium.org/>



12.12 If our school receives an allegation relating to an incident that happened when an individual or organisation was using our premises for the purposes of running activities for children (for example community groups, sports associations, or serviced providers that run extra-curricular activities), as with any safeguarding allegation, where this is the case, we will follow our safeguarding policies and procedures, including the LADO. Furthermore, our lettings agreement for other users requires that the organiser will manage the suspension of adults where necessary from school premises.

12.13 Our school staff including supply staff are aware of and have an understanding of our 'Guidelines for Avoiding Allegations of Abuse' as outlined in Appendix 4.

12.14 Our school staff including supply staff and volunteers understand their responsibilities in raising an allegation against another staff member; following local authority and LSCP guidance and procedures.

## 13 Whistleblowing

13.1 We recognise that children cannot be expected to raise concerns in an environment where staff fail to do so.

13.2 All staff should be aware of their duty to raise concerns about the attitude or actions of colleagues. If necessary, they should speak to the Chair of Governors or the Local Authority Designated Officer.

13.3 All staff are aware of and understand how to use our school's whistleblowing procedures. (Appendix 5)

13.4 All staff have access to the NSPCC Whistleblowing Helpline.

## 14 Our role in the prevention of abuse

14.1 We recognise that the school plays a significant part in the prevention of harm to our pupils by providing pupils with effective lines of communication with trusted adults, supportive friends and an ethos of protection.

### 14.2 The school community will therefore:

- Establish and maintain an ethos, which is understood by all staff, which enables children to feel secure and encourages them to talk knowing that they will be listened to. This includes considering the best interest of a child and maintaining the ethos of 'it could happen here'





- Ensure that all children know there is an adult in the school whom they can approach if they are worried or in difficulty.
- We will provide opportunities for students to develop skills, concepts, attitudes and knowledge that promote their safety and well-being.
- Relevant issues will be addressed through the PSHE curriculum, for example self-esteem, emotional literacy, assertiveness, power, sex and relationship education, mental/physical health, e-safety and bullying.
- Relevant safeguarding issues will be addressed through other areas of the curriculum, for example, circle time, English, History, Drama, Art, ICT and E Safety (includes online and offline safety)
- Other areas of work
- All our policies which address issues of power and potential harm, for example bullying, equal opportunities, handling, positive behaviour, will be linked to ensure a whole school approach.
- Our safeguarding policy cannot be separated from the general ethos of the school, which should ensure that students are treated with respect and dignity, taught to treat each other with respect, feel safe, have a voice, and are listened to.

## 15 Safeguarding students who are vulnerable to extremism

15.1 Since 2010, when the Government published the Prevent Strategy<sup>8</sup> and (Revised Prevent Duty Guidance 2015<sup>9</sup>), there has been an awareness of the specific need to safeguard children, young people and families from violent extremism. There have been several occasions both locally and nationally in which extremist groups have attempted to radicalise vulnerable children and young people to hold extreme views including views justifying political, religious, sexist or racist violence, or to steer them into a rigid and narrow ideology that is intolerant of diversity and leaves them vulnerable to future radicalisation.

15.2 Leicester City Primary PRU values freedom of speech and the expression of beliefs/ ideology as fundamental rights underpinning our society's values. Both students and teachers have the right to speak freely and voice their opinions. However, freedom comes with responsibility and free speech that is designed to manipulate the vulnerable or that leads to violence and harm of others goes against the moral principles in which freedom of speech is valued. Free speech is not an unqualified privilege; it is subject to laws and policies governing equality, human rights, community safety and community cohesion.

15.3 The current threat from terrorism in the United Kingdom may include the exploitation of vulnerable people, to involve them in terrorism or in activity in support of terrorism. The normalisation of extreme views may also make children and young people vulnerable to future

---

<sup>8</sup> Prevent Strategy 2011 - [https://www.gov.uk/government/uploads/system/uploads/attachment\\_data/file/97976/prevent-strategy-review.pdf](https://www.gov.uk/government/uploads/system/uploads/attachment_data/file/97976/prevent-strategy-review.pdf) & CONTEST Strategy 2011 - [https://www.gov.uk/government/uploads/system/uploads/attachment\\_data/file/97994/contest-summary.pdf](https://www.gov.uk/government/uploads/system/uploads/attachment_data/file/97994/contest-summary.pdf)

<sup>9</sup> Revised Prevent Duty Guidance 2015 <https://www.gov.uk/government/publications/prevent-duty-guidance>



manipulation and exploitation. Leicester City Primary PRU is clear that this exploitation and radicalisation should be viewed as a safeguarding concern.

Definitions of radicalisation and extremism, and indicators of vulnerability to radicalisation are in Appendix 4.

15.4 Leicester City Primary PRU seeks to protect children and young people against the messages of all violent extremism including, but not restricted to, those linked to religious ideologies, or to Far Right/Neo Nazi/White Supremacist ideology, Irish Nationalist extremist and Animal Rights movements.

15.5 LOCAL CONTEXT : Leicester City Primary PRU takes referrals from across the whole of Leicester City Education Authority. We recognise that Leicester as a whole is a very multicultural and diverse city. However, our children generally do not reflect this diversity and often come from specific areas across the city. Risk of radicalisation is assessed on an individual basis as children begin their transition process into the PRU. (See Appendix 3)

### **Risk reduction**

15.6 The school governors/proprietors/trustees, the Headteacher and the DSL's for Safeguarding will assess the level of risk within the school and put actions in place to reduce that risk. Risk assessment may include consideration of the school's RE curriculum, SEND policy, the use of school premises by external agencies, integration of students by gender and SEN, anti-bullying policy and other issues specific to the school's profile, community and philosophy.

15.7 When any member of staff has concerns that a student may be at risk of radicalisation or involvement in terrorism, they should speak with the DSL in the first instance

15.8 Numerous factors can contribute to and influence the range of behaviours that are defined as violent extremism, but most young people do not become involved in extremist action. For this reason, the appropriate interventions in any particular case may not have any specific connection to the threat of radicalisation, for example they may address mental health, relationship or drug/alcohol issues.

15.9 Our staff have undergone Prevent Awareness Training and understand the steps to follow, via discussions with the DSL, if a referral to the Channel Programme is required

## **16 Contextual Safeguarding and Extra Familial Harms (Child Criminal Exploitation)**

16.1 CCE is a form of abuse and occurs when an individual or group takes advantage of an imbalance of power to coerce, manipulate or deceive a child into criminal activity. Safeguarding incidents and CCE can be associated with factors outside the school and/or can occur between children outside of these environments.



Leicester City Primary PRU staff, especially our Designated Safeguarding Lead (and deputies) will take into consideration whether children are at risk of abuse or exploitation in situations outside their families. Extra-familial harms take a variety of different forms and children can be vulnerable to multiple harms including (but not limited to) sexual abuse (including harassment and exploitation), domestic abuse in their own intimate relationships (teenage relationship abuse), criminal exploitation, serious youth violence, county lines, and radicalisation.

This is known as contextual safeguarding, which simply means Leicester City Primary PRU staff will take into consideration wider environmental factors that may be present in a child's life that are a threat to their safety and or welfare. This way, schools and colleges are able to provide as much information as possible as part of the referral process to Children's Social Care as necessary. Environmental factors within Contextual Safeguarding include but not exclusive;

## 17 County Lines

17.1 Criminal exploitation of children is a widespread form of harm that is a typical feature of county lines criminal activity: drug networks or gangs groom and exploit children and young people to carry drugs and money from urban areas to suburban and rural areas, market and seaside towns. County Lines is a term used when drug gangs from big cities expand their operations to smaller towns, often using violence to drive out local dealers and exploiting children and vulnerable people to sell drugs.

17.2 Common feature in county lines drug supply is the exploitation of young and vulnerable people. The dealers will frequently target children and adults - often with mental health or addiction problems - to act as drug runners or move cash so they can stay under the radar of law enforcement.

17.3 People exploited in this way will quite often be exposed to physical, mental and sexual abuse, and in some instances will be trafficked to areas a long way from home as part of the network's drug dealing business.

17.4 We might not immediately think of children when we hear the words 'financial fraud', but the reality is that more and more young people are finding themselves the victims of financial exploitation, being groomed online to open bank accounts and launder criminal money. This is known as Child Financial Abuse (CFA). Criminals befriend young people through social media and online games. They offer them gifts, promise easy money, gaming credits, skins or cryptocurrency. Once they've gained a young person's trust, they force them to carry out fraudulent activities, like opening a bank account for them. This is financial exploitation.



## 18 Serious Violence, Gang Violence & Youth Crime

Section 18 and 19 of this policy outline the school responsibility in supporting children who are involved with Gangs and Knife Crime. The same safeguarding procedures will apply if a child is experiencing this including contextual safeguarding. The Home Office have produced additional supporting guidance on Preventing and reducing serious violence<sup>11</sup> to support schools further.

18.1 A gang is group of individuals that spends time in public and engages in criminal activity and violence. The group may also be territorial or in conflict with other gangs. Young people involved in gangs have an increased risk of experiencing violence and other types of abuse including sexual exploitation. Gang crime and serious youth violence is also often synonymous with knife crime and other serious violence.

18.2 The vast majority of young people and education establishments will not be affected by serious violence or gangs. However, where these problems do occur there will almost certainly be a significant impact.

18.3 Gangs specifically target children who have been excluded from school to groom them as drug dealers in towns across the UK. Exclusion from school appears to be a highly significant trigger point for the escalation of County Lines involvement for children who might be on the fringes of such activity or who are easily manipulated.

## 19 Knife Crime

19.1 Knife crime has been receiving countrywide attention after being recognised as a contemporary national threat in the UK. There have been a number of high-profile incidents where teenagers have been killed or injured by someone using a knife as a weapon. Knife crime simply put is any crime that involves a knife. This includes:

- carrying a knife or trying to buy one if you're under 18
- threatening someone with a knife
- carrying a knife that is banned
- a murder where the victim was stabbed with a knife
- a robbery or burglary where the thieves carried a knife as a weapon
- Within Leicester, May 2019 saw 237 reported incidents involving a knife or bladed instrument which was an increase of 30 from the previous month

## 20 Child Criminal Exploitation and Cybercrime Involvement

20.1 Organised criminal groups or individuals exploit children and young people due to their computer skills and ability, in order to access networks/data for criminal and financial gain. There



are a number of signs that may indicate a pupil is a victim or is vulnerable to being exploited which include;

- Missing / Absent from education
- Show signs of other types of abuse/aggression towards others
- Have low self-esteem, and feelings of isolation, stress or fear
- Lack trust in adults and appear fearful of authorities
- Have poor concentration or excessively tired
- Become anti-social
- Display symptoms of substance dependence
- Excessive time online computer/gaming forums
- Social Isolation in school with peers
- High-functioning with an interest in computing

## 21 Child Criminal Exploitation and Child Sexual Exploitation (CSE)

21.1 County Lines criminal exploitation is also synonymous with Child Sexual Exploitation. Criminal activity and Gang Association can lead into CSE through situations such as initiation, peer pressure in addition to sexual favours. Although county lines is mainly criminal, all our staff are aware of the definitions of CSE, signs and impact on vulnerable children. This is further outlined in section 17.1 of this Policy.

## 22 Modern Slavery & Trafficking

22.1 Slavery is an umbrella term for activities involved when one person obtains or holds another person in compelled service. The number of British children identified as potential victims of modern slavery has more than doubled in a year, prompting fresh concerns about child exploitation by county lines drugs gangs.

### Someone is in slavery if they are:

- forced to work through mental or physical threat
- owned or controlled by an 'employer', usually through mental or physical abuse or the threat of abuse
- dehumanised, treated as a commodity or bought and sold as 'property'
- physically constrained or have restrictions placed on his/her freedom
- 'slavery' is where ownership is exercised over a person
- 'servitude' involves the obligation to provide services imposed by coercion
- 'forced or compulsory labour' involves work or service extracted from any person under the menace of a penalty and for which the person has not offered himself voluntarily
- 'human trafficking' concerns arranging or facilitating the travel of another with a view to exploiting them.



## 22.2 Human trafficking;

22.3 Recruitment, transportation, transfer, harbouring or receipt of persons by means of threat or use of force or other forms of coercion, of abduction, of fraud, of deception, of the abuse of power or of a position of vulnerability or of the giving or receiving of payments or benefits to achieve the consent of a person having control over another person; (where a child is involved, the above means are irrelevant). For the purposes of exploitation, which includes (but is not exhaustive):

- Prostitution
- Other sexual exploitation
- Forced labour
- Slavery (or similar)
- Servitude etc.
- Removal of organs

## 23 Child on Child Sexual Violence and Sexual Harassment (Child on Child Abuse)

KCSIE 2023, Part 5 is explicit in their definition of Child on Child abuse and its forms. However, within the context of contextual safeguarding, child on child abuse and peer influence has a massive impact on the child and young person (CYP). If CYP are exposed to other CYP who are known for being exploited, they are more likely to experience child on child abuse and be 'influenced' /'swayed' to participate in illegal activity, criminal activity and sexual activity. Further information on Child on Child abuse/ Child on Child Sexual Violence and Sexual Harassment is outlined in our school's Policy.

## 24 Children and the court system

24.1 Children are sometime required to give evidence in criminal courts, either for crimes committed against them or for crimes they have witnessed. There are two age appropriate guides to support children 5-11-year olds and 12-17 year olds.

<https://www.gov.uk/government/publications/young-witness-booklet-for-12-to-17-year-olds> and <https://www.gov.uk/government/publications/young-witness-booklet-for-5-to-11-year-olds>

24.2 Making child arrangements via the family courts following separation can be stressful and entrench conflict in families. This can be stressful for children. The Ministry of Justice has launched an online child arrangements information tool

<https://helpwithchildarrangements.service.justice.gov.uk/> with clear and concise information on the dispute resolution service. This may be useful for some parents and carers. If a child or young person from our school is in a situation where they are required to give evidence, school staff members will support the child and family members where appropriate.



## 25 Children with family members in prison

25.1 The imprisonment of a household member is one of ten adverse childhood experiences known to have a significant negative impact on children's long-term health and wellbeing, their school attainment, and later life experiences. Children may have to take on extra responsibilities at home, including becoming young carers in some situations.

25.2 These children are at risk of poor outcomes including stigma, isolation and poor mental health. Parental imprisonment is also associated specifically with negative school experiences, such as truanting, bullying and failure to achieve in education and children of prisoners are at a higher risk of mental ill health and have an increased likelihood of experiencing poverty compared to their peers.

25.3 Approximately 200,000 children have a parent sent to prison each year and as such, Leicester City Primary PRU staff members will support children and their family members if children from our school have family members in prison. In such cases, Leicester City Primary PRU will remain non judgemental and supportive towards the child and family so that they can achieve the best whilst in our environment. Furthermore, as if a parent or carer finds themselves in this situation, we encourage you to speak with our DSL so that support can be given as necessary.

## 26 Homelessness

26.1 Being homeless or being at risk of becoming homeless presents a real risk to a child's welfare. Our DSL are aware of contact details and referral routes in to the Local Housing Authority so they can raise/progress concerns at the earliest opportunity if our children and family are experiencing homelessness. Indicators that a family may be at risk of homelessness include household debt, rent arrears, domestic abuse and anti-social behaviour, as well as the family being asked to leave a property.

26.2 Whilst referrals and or discussion with the Local Housing Authority will be progressed as appropriate, and in accordance with local procedures, this does not, and should not, replace a referral into children's social care where a child has been harmed or is at risk of harm.

26.3 The Homelessness Reduction Act 2017 places a new legal duty on English councils so that everyone who is homeless or at risk of homelessness will have access to meaningful help including an assessment of their needs and circumstances, the development of a personalised housing plan, and work to help them retain their accommodation or find a new place to live.

26.4 Furthermore, Leicester City Primary PRU staff also promote Early Help and Support (Section 24) so that children and families can be identified and supported at an early stage. If a parent or carer and/or their children find themselves in this situation, we strongly urge you to speak to our DSL or member of school staff so that support can be provided.



26.5 Safeguarding CYP is a local and national priority and within Leicester City Primary PRU, protecting children from abuse, harm and neglect is a priority. Our Safeguarding and Child Protection Policy along with the school's values, ethos and behaviour policies, provides the basic platform to ensure children and young people are given the support to respect themselves and others, stand up for themselves and protect each other. Our staff are well versed with local and national guidance and are aware of emerging safeguarding concerns that could productionally harm our children and young people;

- Our school keeps itself up to date on the latest advice and guidance provided to assist in addressing specific vulnerabilities, mental health and forms of exploitation
- Our staff are supported to recognise warning signs and symptoms in relation to specific issues, and include such issues in an age appropriate way in their curriculum
- Our staff are aware of emerging issues and contextual safeguarding and take this into consideration when assessing children and young people's needs
- Our school works with and engages our families and communities to talk about such issues
- Our school staff are supported to talk to families about sensitive concerns in relation to their children and to find ways to address them together wherever possible.
- Our DSL knows where to seek and get advice as necessary.
- Our school brings in experts and uses specialist material to support the work we do
- Our school staff fully understand how to raise a concern using the appropriate channels

26.6 As Leicester City Primary PRU staff are aware that safeguarding issues can manifest themselves in many different ways, our staff have received annual safeguarding training and additional information to better equip themselves in the knowledge of other forms of abuse as per Keeping Children Safe in Education 2023. These are outlined in Appendix 1.

## 27 Young Carers

27.1 A young carer is defined as: 'You're a young carer if you're under 18 and help to look after a relative with a disability, illness, mental health condition, or drug or alcohol problem. If you're a young carer, you probably look after on of your parents or care for a brother or sister. You may do extra jobs in and around the home, such as cooking, cleaning, or helping someone get dressed and move around. You may also give a lot of physical help to a brother or sister who's disabled or ill. Along with doing things to help your brother or sister, you may be giving them and your parents emotional support too'.

27.2 Here at Leicester City Primary PRU we understand the difficulties that young carers face when supporting family members which can range from not completing homework, arriving to school late or not having enough sleep as examples. We are not here to judge, but rather to support the needs and wellbeing of the young person where necessary; our DSL's will support the young person in ensuring relevant support and guidance is given. Where possible, parents and carers should make the schools/college aware if a child they live with is a young carer to ensure relevant support is received as soon as possible.





27.3 Furthermore, additional information can be sought by contacting the schools directly or going direct to Leicester City Council, Duty and Assessment Service on: 0116 454 1004 and choose option 1 'City', then option 1 'Child' and then option 4 'Young carer' who provide regular and ongoing support to children and young people that are under the age of 18, who care for family members who are physically or mentally unwell, disabled and/or misuses substances.<sup>10</sup>

## 28 Other Forms of Abuse and neglect

28.1 **Child Sexual Exploitation (CSE) & Trafficking.** CSE is a form of abuse and occurs when an individual or group takes advantage of an imbalance of power to coerce, manipulate or deceive a child into sexual activity. Sexual exploitation can take many forms ranging from seemingly consensual relationships to serious gang and group exploitation.

28.2 Leicester City Primary PRU staff are aware that sexual exploitation can take many forms and that pupils may not exhibit external signs of abuse. Our staff are also aware that it is an offence carrying a maximum sentence of two years imprisonment where an adult (any adult) intentionally communicates (for example, by e-mail, text message, written note or orally) with a child under 16 (whom the adult does not reasonably believe to be aged 16 or over) for the purpose of obtaining sexual gratification. This act forms part of Section 67 of the Serious Crime Act 2015<sup>11</sup> (offence of Sexual Communication with a Child) and came into force on 3 April 2017.

[https://www.gov.uk/government/uploads/system/uploads/attachment\\_data/file/604931/circular-commencement-s67-serious-crime-act-2015.pdf](https://www.gov.uk/government/uploads/system/uploads/attachment_data/file/604931/circular-commencement-s67-serious-crime-act-2015.pdf)

28.3 Therefore, our staff are vigilant for the less obvious signs, such as lots of new electronic equipment, when before there was none, seeming to have extra money to spend, moving away from established friendship groups, and the use of language appropriate/inappropriate for the child's age.

28.4 Our school staff are also aware of some of the signs and symptoms of CSE through LSCP B Leaflets<sup>12</sup>, staff induction and as part of annual *Whole School Safeguarding Training which in addition to the CSE & Trafficking Course delivered through Children's Workforce Matters*<sup>13</sup> that the DSL has attended.

28.5 Our school staff follow guidance and procedures as outlined in 'Safeguarding Children and Young People from Sexual Exploitation in Leicester, Leicestershire and Rutland'<sup>14</sup> available on the LSCP B website.

---

<sup>10</sup> [Help for young carers \(leicester.gov.uk\)](https://www.leicester.gov.uk/health-and-social-care/adult-social-care/support-for-carers/help-for-young-carers/) | <https://www.leicester.gov.uk/health-and-social-care/adult-social-care/support-for-carers/help-for-young-carers/>

<sup>11</sup> <https://www.gov.uk/government/publications/circular-201701-sexual-communication-with-a-child-implementation-of-s67-of-the-serious-crime-act-2015>

<sup>12</sup> <https://www.lcitylscb.org/safeguarding-leaflets/>

<sup>13</sup> <http://www.childrensworkforcematters.org.uk>

<sup>14</sup> <https://www.lcitylscb.org/safeguarding-leaflets/>



28.6 Our school staff are aware that if a disclosure is raised in reaction to CSE, that it will be reported straight to the DSL/SLT or Duty & Advice in their absence.

### **28.8 Sharing Nudes & Semi Nudes (formally Sexting) can also form part of CSE both online and offline**

28.9 Child sexual exploitation can occur in different ways and in different situations. Many young people are 'groomed' by their abuser, online or face-to-face. Grooming is an action deliberately undertaken with the aim of befriending and establishing an emotional connection with a child, to lower the child's inhibitions with the intention to sexually abuse them.

28.10 Groomers will hide their true intentions and may spend a long time gaining a child's trust through a range of mediums including social media platforms. Section 67 of the Serious Crime Act 2015 (offence of Sexual Communication with a Child) which came into force on 3 April 2017 also applies to Sexting and Grooming and our staff are fully aware of the legislation<sup>15</sup>.

#### **Grooming Models include;**

- The relationship / peer model
- Organised / network model & trafficking model
- Inappropriate relationship model
- Gangs model
- Online Gaming / Social Networks

28.11 Our staff are aware of the types of grooming which take place, including grooming models through their annual safeguarding training and information from our DSL.

28.12 Sharing Nudes or Semi Nudes / Sexting is when someone sends or receives a sexually explicit text, image or video. This includes sending 'nude pics', 'rude pics' or 'nude selfies'. This can be via Child on Child or other adults. As recently as June 2017, figures show there have been more than 4,000 cases since 2013 where children have taken explicit pictures of themselves and sent them to others, the youngest being 5 years old and research from Child Line suggest six out of ten teenagers say they have been asked for sexual images or videos. It is illegal to possess, take or distribute sexual images of someone who is under 18, even if the young person under the age of 18 has taken the image themselves and passed it on themselves.

Leicester City Primary PRU takes a zero tolerance approach if children are found to be sending sexual images of themselves or others whether intentionally or maliciously in our school. Leicester City Primary PRU has a duty of care to inform the Police and Children's Social Care if such a case occurs. We will also notify parents directly if their children are involved. In addition to supporting our children with being safe in a digital world and highlighting the dangers, our staff have also been issued with the guidance on 'Sharing Nudes and Semi Nudes' from the UK Council for Internet Safety (Dec 2020) and have an understanding of how to handle such incidents if they arise in our school.

<sup>15</sup> [https://www.gov.uk/government/uploads/system/uploads/attachment\\_data/file/604931/circular-commencement-s67-serious-crime-act-2015.pdf](https://www.gov.uk/government/uploads/system/uploads/attachment_data/file/604931/circular-commencement-s67-serious-crime-act-2015.pdf)



[https://inege.com/wp-content/uploads/2021/01/UKCIS\\_sharing\\_nudes\\_and\\_semi\\_nudes\\_advice\\_for\\_education\\_settings\\_V2.pdf](https://inege.com/wp-content/uploads/2021/01/UKCIS_sharing_nudes_and_semi_nudes_advice_for_education_settings_V2.pdf)

28.13 Leicester City Primary PRU staff follow school procedures in reporting such concerns and promote E Safety and dangers of Sharing Nudes/Sexting, Grooming and CSE through lessons, PSHE and assemblies. Our pupils are taught how to keep safe on and off line and E Safety is promoted throughout the school and home environment. Our school have also discussed local and national cases where grooming of young children has taken place such as the Kayleigh Haywood Story/Becks Game to highlight the dangers.

28.14 Our E safety policy is highlighted to staff, pupils and parents and is available on our school's website including our acceptable usage policy and out staff have undergone relevant online safety training at induction and regularly throughout the year.

## 29 Child on Child Sexual Violence & Harassment including Child on Child Abuse/Children using Harmful Sexual Behaviour<sup>16</sup> (HSB)

All staff should be aware that safeguarding issues can manifest themselves via child on child abuse. This is most likely to include, but may not be limited to:

- bullying (including cyberbullying);
- physical abuse such as hitting, kicking, shaking, biting, hair pulling, or otherwise causing physical harm;
- sexual violence and sexual harassment;
- sexual activity without consent
- consensual and non-consensual sharing of nudes and semi nudes / sexting
- upskirting
- initiation/hazing type violence and rituals
- 

29.1 Sexual violence and sexual harassment<sup>17</sup> can occur between two children of **any** age and sex. It can also occur through a group of children sexually assaulting or sexually harassing a single child or group of children. Children who are victims of sexual violence and sexual harassment will likely find the experience stressful and distressing. This will, in all likelihood, adversely affect their educational attainment.

29.2 Sexual violence and sexual harassment exist on a continuum and may overlap, they can occur online and offline (both physical and verbal) and are never acceptable. It is important that **all** victims are taken seriously and offered appropriate support. Staff should be aware that some groups are potentially more at risk. Evidence shows girls, children with SEND and LGBTQ children are at greater risk. Some risks can be especially compounded where children who are LGBTQ lack a

<sup>16</sup> [https://llrscb.proceduresonline.com/p\\_sexually\\_harm\\_behav.html?zoom\\_highlight=children+using+abusive+behaviour](https://llrscb.proceduresonline.com/p_sexually_harm_behav.html?zoom_highlight=children+using+abusive+behaviour)

<sup>17</sup> [https://assets.publishing.service.gov.uk/government/uploads/system/uploads/attachment\\_data/file/719902/Sexual\\_violence\\_and\\_sexual\\_harassment\\_between\\_children\\_in\\_schools\\_and\\_colleges.pdf](https://assets.publishing.service.gov.uk/government/uploads/system/uploads/attachment_data/file/719902/Sexual_violence_and_sexual_harassment_between_children_in_schools_and_colleges.pdf)



trusted adult with whom they can be open with. Our staff therefore understand and endeavour to reduce any additional barriers faced and provide a safe space for our children to speak out or to share their concerns.

29.3 Leicester City Primary PRU takes Child on Child abuse/Child on Child Sexual Violence & Harassment seriously and we understand that some children are more vulnerable to physical, sexual and emotional bullying and abuse by their peers. In our school, this kind of abuse will always be taken as seriously as abuse perpetrated by an adult and as seriously as a child who is suffering or likely to suffer significant harm.

29.4 Our staff understand that a significant proportion of sexual related offences are committed by teenagers and, on occasion, such offences are committed by younger children. Our staff therefore understand not to dismiss some abusive sexual behaviour as 'normal' between young people and not to create high thresholds in such cases before appropriate action is taken.

29.5 Our staff will respect confidentiality and anonymity of a child or young person reporting incidents of sexual violence and sexual harassment including situations where the child or young person asks staff not to tell anyone about the incident; making referrals against the wishes of the young person and considering the potential impact of social media breaching confidentiality. There are no easy or definitive answers when a victim makes this request. If the victim does not give consent to share information, staff may still lawfully share it, if there is another legal basis under the UK GDPR that applies.

29.6 Our lead DSL (or a deputy) will endeavour to balance the victim's wishes against their duty to protect the victim and other children. If the lead DSL (or a deputy) decide to make a referral to local authority children's social care and/or a report to the police against the victim's wishes, our DSL and staff will handle all incidents extremely carefully, and the reasons will explained to the victim, appropriate specialist support will be offered taking into consideration the best interest of the child at all times.

29.7 Where incidents of sexual violence and harassment have been raised, our staff, where applicable, will take into consideration the impact on siblings and understand the importance of intra familial harms.

29.8 Staff and carers of children living away from home need clear guidance and training to identify the difference between consenting and abusive, and between appropriate and exploitative peer relationships. Our school will provide information, guidance and training to relevant staff members to support them with this.

29.9 Children and young people who abuse others should be held responsible for their abusive behaviour, while being identified and responded to in a way that meets their needs as well as protecting others and our school has clear guidelines around this.



29.10 Our school staff understand that with regard to the alleged perpetrator(s), advice on behaviour in schools<sup>18</sup> is clear that teachers can sanction pupils whose conduct falls below the standard which could be reasonably expected of them. Disciplinary action can be taken whilst other investigations by the police and/or local authority children's social care are ongoing (if any). The fact that another body is investigating or has investigated an incident does not in itself prevent our school from coming to its own conclusion, on the balance of probabilities, about what happened, and imposing a penalty accordingly. Our DSL or deputy DSL will take a leading role with this.

29.11 Our school also refers to the LSCPB procedures<sup>19</sup> which are written with particular reference to sexually abusive and inappropriate behaviours. Keeping Children Safe in Education 2023 (Part 5) also makes reference to Child-on-Child Sexual Violence & Harassment and where there are serious child protection concerns, as a result of non-sexual violence by a child or young person, leading to actual or possible significant harm, our safeguarding and child protection measures will be implemented.

## 30 Upskirting

30.1 Upskirting is the act of taking a photograph of underneath a person's skirt without their consent. It's often performed in a public place; public transport or on an escalator, with crowds of people making it harder to spot people taking these photos. It could also happen on the way to and from school and within a school. Being victim to such an incident can cause emotional distress for the young child or young person involved. Leicester City Primary PRU take these types of incidents seriously and our staff are aware of the law against 'Upskirting' which came into force on April 12, 2019 in England and Wales. If our staff are made aware of such incidents, the schools will follow its safeguarding procedures in addition to seeking advice from the Police.

30.2 At Leicester City Primary PRU, all our staff are aware of the importance of:

- making clear that sexual violence and sexual harassment is not acceptable, will never be tolerated and is not an inevitable part of growing up;
- not tolerating or dismissing sexual violence or sexual harassment as "banter", "part of growing up", "just having a laugh" or "boys being boys"; and
- challenging behaviours (potentially criminal in nature), such as grabbing bottoms, breasts and genitalia, flicking bras, upskirting and lifting up skirts. Dismissing or tolerating such behaviours risks normalising them and serious action will be taken

30.3 If our staff have a concern that a child might have been abused by another child and/or is displaying inappropriate sexualised behaviour, staff will in the first instance refer their concerns to the DSL. The DSL will then directly contact Children's Social Care/DAS in accordance with the LSCPB Referrals Procedure to decide how the incident will be managed. Furthermore, our DSL will also seek advice from the Police where necessary. Our staff are aware of what Child on Child

<sup>18</sup> [Behaviour in schools guidance \(publishing.service.gov.uk\)](https://www.publishing.service.gov.uk/government/uploads/system/uploads/attachment_data/file/671117/behaviour-in-schools-guidance.pdf)

<sup>19</sup> [https://llrscb.proceduresonline.com/p\\_sexually\\_harm\\_behav.html?zoom\\_highlight=children+using+abusive+behaviour](https://llrscb.proceduresonline.com/p_sexually_harm_behav.html?zoom_highlight=children+using+abusive+behaviour)



abuse and Sexual Violence/Harassment is at national and local levels through our annual Whole School Training and our DSL has attended CUSAB Training delivered by Safeguarding in Education to enhance their knowledge in this area further.

## 31 Domestic Violence and Abuse & Violence between young people (Teen relationships)

31.1 The cross-government definition of domestic violence and abuse is<sup>20</sup>:

Any incident or pattern of incidents of controlling, coercive, threatening behaviour, violence or abuse between those aged 16 or over who are, or have been, intimate partners or family members regardless of gender or sexuality. The abuse can encompass, but is not limited to:

- psychological
- physical
- sexual
- financial
- emotional

31.2 There have been a number of high profiles cases both locally and nationally where domestic violence and abuse has had a significant and direct impact on the child and their mental health and wellbeing. If the school is made aware of incidents of domestic violence which is impacting on a child within the school, (suspicions and allegations of abuse, harm and significant risk to a child), the school will follow Local Authority and Leicester Safeguarding Board guidelines in reporting such concerns to Children's Social Care, Duty and Advice or the Police and will also seek further guidance where necessary.

31.3 Domestic abuse is not limited to adults; there is an increasing awareness of violence from one teenager to another;

- 1 in 5 teenage girls have been assaulted by a boyfriend
- Young women are more likely to experience sexual violence than other age groups
- Young women with older partners are at increased risk of victimisation
- Recent surveys (including NSPCC<sup>21</sup>, Zero Tolerance and End Violence Against Women campaign) reveal that approximately 40% of our young people are already being subjected to relationship abuse in their teenage years.

31.4 If Leicester City Primary PRU is made aware of children behaving this way with other children within our school, and violence is apparent between the young people's intimate relationship; this includes issues around the use of social media and Sexting, we will view this as

---

<sup>20</sup> <https://www.gov.uk/guidance/domestic-violence-and-abuse>

<sup>21</sup> <https://www.nspcc.org.uk/services-and-resources/research-and-resources/pre-2013/partner-exploitation-and-violence-in-teenage-intimate-relationships/>



a significant child welfare concern and where necessary, the appropriate agencies will be informed. This includes Children Social Care and the Police.

31.5 If such cases are prevalent within our school, whether the incident involves Adult Relationships or Teen Relationships, the school will also work closely with the child and the Headteacher/DSL will endeavour to support the child who has been exposed to this type of violence and abuse with the involvement of (where appropriate) their parents/carers and their boyfriend/girlfriend.

31.6 Furthermore, involvement through Operation Encompass and Early Help Offer can also support the child and parents/carers and the school will ensure communications and multiagency working with Social Care and Early Help is maintained to fully support the child and their family. (Victims). Staff will also work with all the children in our school to ensure information and the importance of healthy relationships is highlighted through assemblies, circle time and PSHE lessons.

## **32 Child Missing From Education / Children who are absent from education**

32.1 Children being absent from education for prolonged periods and/or on repeat occasions can act as a vital warning sign to a range of safeguarding issues including neglect, child sexual and child criminal exploitation - particularly county lines. Our response to persistently absent pupils and children missing education supports identifying such abuse, and in the case of absent pupils, helps prevent the risk of them becoming a child missing education in the future. This includes when problems are first emerging but also where children are already known to the local authority<sup>22</sup>.

32.2 A Child Missing From Education forms part of the wider LSCP procedures<sup>23</sup> for children who go missing from School, Home, Care Education and includes Families who go missing.

32.3 Should a pupil go missing from Leicester City Primary PRU our Attendance Officer (Jo Green) will inform the DSL/SLT and contact the Educational Welfare Service. The DSL will consider further actions and/or support should it be required and to ensure they help identify the any risk of abuse and neglect, including sexual exploitation and to help prevent the risks of them going missing in future.

32.4 At Leicester City Primary PRU if a child is no longer coming to our school where the parent/carer has removed them, we will ensure that appropriate steps are taken and measures are in place. I.e. we will follow our school guidelines in monitoring those parents/carers home tutoring, follow procedures where a child is taken out of school to go on holiday, where a child is removed from school as the family are moving away;

<sup>22</sup> [Missing Children and Adults - A cross government strategy \(publishing.service.gov.uk\)](#) (additional resources for schools/colleges)

<sup>23</sup> <https://llrscb.proceduresonline.com/index.htm>



32.5 We will notify all relevant partner agencies/services including Education Welfare, correct forms will be completed, information will be recorded and child folders/information will be passed on to the appropriate person (where applicable).

### 33 Honor based Abuse (HBA)

33.1. Honour-based Abuse is a term that embraces a variety of crimes of violence (mainly but not exclusively against women) including domestic abuse, which is perpetrated in the name of so called 'honour'. The honour code which it refers to is set at the discretion of male relatives and women who do not abide by the 'rules' are then punished for bringing shame on the family. Infringements may include a woman having a boyfriend; rejecting a forced marriage; pregnancy outside of marriage; interfaith relationships; seeking divorce, FGM, Forced marriage, abuse linked to faith and culture, breast ironing, inappropriate dress or make-up and even kissing in a public place.

33.2 HBA can exist in any culture or community where males are in position to establish and enforce women's conduct. However, males can also be victims, sometimes as a consequence of a relationship which is deemed to be inappropriate, if they are gay, have a disability or if they have assisted a victim.

### 34 Female Genital Mutilation

34.1 Female Genital Mutilation is an illegal operation under the Female Mutilation Act 2003, is a form of child abuse and as such, is dealt with under the school's Child Protection & Safeguarding Policy.

34.2 Definition of Female Genital Mutilation<sup>24</sup> (FGM):

FGM comprises of all procedures involving partial or total removal of the external female genitalia or other injury to the female genital organs whether for cultural or non-therapeutic reasons.

Professionals in all agencies, and individuals and groups in relevant communities, need to be alert to the possibility of a girl being at risk of FGM, or already having suffered FGM. Therefore, our staff have been briefed on the importance of FGM through our Whole School Safeguarding taken in September 2023 and are aware of some of the signs and symptoms.

Responding to FGM - The school will ensure;

- We raise awareness of staff in regard to the issues of FGM through Whole School Training

---

<sup>24</sup> FGM Revised Guidance July 2020 - <https://www.gov.uk/government/publications/multi-agency-statutory-guidance-on-female-genital-mutilation>





- Staff have a clear understanding of what FGM is
- FGM is within the schools Safeguarding Policy
- Sex and Health curriculum supports pupils understanding of their bodies and keeping themselves safe
- Monitoring absences

34.3 As of October 2015, it became a mandatory responsibility of all staff members to report any suspicion of FGM to the police if the child is under 18 years of age. If any of our staff at Leicester City Primary PRU are aware of such concerns, staff will, in the first instance, report their concerns to the DSL and/or Headteacher and then take appropriate steps to either directly contact the Police or seek advice from Duty & Advice, Children's Social Care.

34.4 Any concerns raised including any referrals made will be; monitored closely and recorded following our school's procedures by the staff members raising the concern, the DSL or both.

34.5 Furthermore, our school staff are aware that guidance on FGM has been updated in July 2020 and the guidance is available to all staff.

## 35 Forced Marriage

35.1 A forced marriage is a marriage that is performed under duress and without the full and informed consent or free will of both parties. Duress cannot be justified on religious or cultural grounds. Victims of forced marriage may be the subject of physical violence, rape, abduction, false imprisonment, enslavement, emotional abuse, and murder. It is important not to confuse 'forced' marriage with 'arranged' marriage. In the instance of an 'arranged' marriage both parties freely consent.

35.2 Since February 2023 it has also been a crime to carry out any conduct whose purpose is to cause a child to marry before their eighteenth birthday, even if violence, threats or another form of coercion are not used. As with the existing forced marriage law, this applies to non-binding, unofficial 'marriages' as well as legal marriages.

### 35.3 The Governments definition of a Forced Marriage<sup>25</sup> is;

A forced marriage is where one or both people do not (or in cases of people with learning disabilities, cannot) consent to the marriage and pressure or abuse is used. It is an appalling and indefensible practice and is recognised in the UK as a form of violence against women and men, domestic/child abuse and a serious abuse of human rights.

35.4 Leicester City Primary PRU staff, through induction and Whole School Training are aware of the importance and impact on a child/student who is involved in such situations.

---

<sup>25</sup> <https://www.gov.uk/guidance/forced-marriage>



35.5 In addition, the Forced Marriage Unit have issued guidance on Force Marriage and vulnerable adults due to an emerging trend of cases where such marriages involving people with learning difficulties. This is not a crime which is perpetrated by men only, sometimes female relatives will support, incite or assist. It is also not unusual for younger relatives to be selected to undertake the abuse as a way to protect senior members of the family. Sometimes contract killers and bounty hunters will also be employed

35.6 In such cases, disclosures and concerns relating to Forced Marriage/Honour Based Abuse will be reported directly to the DSL and the Police due to the impact it could have on the child/student in the wider community. Information will be sought from Children's Social Care Duty & Advice and where appropriate and Police and the Forced Marriage Unit.

## **36 Abuse linked to faith, beliefs and culture**

36.1 Child abuse is never acceptable in any community, in any culture, in any religion, under any circumstances. However, some children are subject to certain kinds of child abuse linked to their faith, belief or culture and this includes abuse that might arise through a belief in spirit possession or other spiritual or religious beliefs.

This kind of abuse can also include;

- Belief in concept of witchcraft, magic or voodoo
- Demons or the devil acting through children or leading them astray
- The evil eye or djinns and dakini
- Ritual or muti murders
- Breast Ironing
- Female Genital Mutilation
- Honour based violence and Forced Marriage
- Chastisement of a child in a Place of Worship

36.2 Whilst this is not an exhaustive list, Leicester City Primary PRU recognises that sadly, such cases are on the increase within the community and as a school, we take such incidents as seriously as any other kind of abuse perpetrated by an adult on a child.

36.3 If the school has been made aware of such a case, the school will follow LSCP procedures and where appropriate, report the incident to Children Social Care and/or the Police.

36.4 As a school, our staff are aware of some of the signs of this kind of abuse and have attended training to support them further. We also work closely with all our children to promote healthy relationships and British Values. Our code of conduct (Children/Teachers/Parents & Carers), also teaches our children mutual respect of other faith, beliefs and cultures in a positive manner rather than negative. We believe and respect each other in our school and maintain this ethos throughout the teaching and learning environment.



## 37 Early Help and Supporting Children and their Families

37.1 Early Help and prevention is about how different agencies work together to help children, young people and their families at any point in their lives to prevent or reduce difficulties. This means providing support as soon as a problem emerges at any point in a child's life, from the foundation years through to the teenage years.

37.2 At Leicester City Primary PRU, key staff members and DSL's have attended our LSCP's Early Help and Early Help Assessment Training and our staff are prepared to identify any children who may benefit from Early Help. (signpost/refer accordingly).

## 38 Bullying and Safeguarding

38.1 **The Law** - Some forms of bullying are illegal and should be reported to the police. These include:

- violence or assault
- theft
- repeated harassment or intimidation, for example name calling, threats and abusive phone calls, emails or text messages
- hate crimes

38.2 Bullying is defined as 'behaviour by an individual or group, usually repeated over time, which intentionally hurts another individual or group either physically or emotionally'. Repeated bullying usually has a significant emotional component, where the anticipation and fear of being bullied seriously affects the behaviour of the victim.

38.3 It can be inflicted on a child by another child or an adult. Bullying can take many forms (for instance, cyber-bullying via text messages or the internet), and is often motivated by prejudice against particular groups, for example on grounds of race, religion, gender, sexual orientation, or because a child is adopted or has caring responsibilities. It might be motivated by actual differences between children, or perceived differences.

38.4 Leicester City Primary PRU has a legal duty to ensure we have an Anti-Bullying Policy in place and that all staff, children and parents/carers are made aware of it. This document can be accessed on our school's website [www.pru.leicester.sch.uk](http://www.pru.leicester.sch.uk) and sets out clear procedures in managing such incidents within the school. We also deliver work in school about anti-bullying through assemblies and lessons and our staff are trained in appropriately dealing with such incidents.

38.5 However, at times, bullying such as Child on Child abuse; sexualised behaviour, serious incidents of harm, homophobic behaviours, cyber bullying and Sexting/Use of mobile phones will be taken seriously and as a serious safeguarding concern especially if the child is at risk of



significant harm. In such cases, our Designated Safeguarding Lead and the Headteacher will assess the situation and seek advice and guidance from Children’s Social care or the Police especially in relation to illegal activity.

### 39 Local Priorities

39.1 Within Leicester City, the Local Authority and LSCPB has have their own priorities which reflect the area in which Leicester City Primary PRU is based. Some of these include being aware of Knife Crime, Gang Related Issues, Radicalisation, County Lines, Criminal Activity, Antisocial Behaviour, FGM and Contextual Safeguarding. (This is not an exhaustive list).

39.2 Within our local community area, our priorities are:

- Priority/Awareness of Neglect
- Priority/Awareness of Knife Crime
- Priority/Awareness of Gang Related Issues
- Priority/Awareness of Antisocial Behaviour
- Priority/Awareness of Radicalisation

39.3 Our SLT, DSL’s and staff are aware of these priorities and we aim to raise awareness through a whole school approach and staff training to ensure our children and young people are aware of such issues and that we implement the correct policies and procedures to ensure that our children and young people are safe within school and within the community we serve. We work closely with other agencies including the Police, Community Groups and Social care and where appropriate, Parents and Carers will also be a part of this whole school and whole community approach process.

### 40 Private Fostering

40.1 A private fostering arrangement is one that is made without the involvement of the local authority to look after a child under the age of 16 (or under 18 if disabled) by someone other than a parent or close relative, for 28 days or more and can include those living with extended family members. So, this could be a child living with people as stated below:

Private Fostering <b>includes</b> a child living with	Private Fostering <b>does not include</b> a child living with:
Godparents	Mother/Father
Great Grandparents	Brothers/Sister
Great Aunts or Uncles	Grandparents
Family Friends	Aunts/Uncles
Step parents where a couple isn’t married or in a civil partnership	Step Parents where a couple is married or in a civil partnership



Cousins	Children and young people who are being looked after by the Authority.
A host family which is caring for a child overseas while they are in education here	

40.2 It's a legal duty (Children Act 1989) for parents or the private foster carer to notify the local authority of whenever a child is not living with a close relative. This should be done six weeks before the arrangement takes place or immediately if it is unplanned or already happening. This is so the local authority can work with private foster carers to keep children safe and also support anyone who is privately fostering.

40.2 Leicester City Primary PRU staff are aware of what Private Fostering is and staff in our school understand their legal duty under the Children Act 1989 to notify the Local Authority/Children's Social Care, they are made aware of such cases. Leicester City Primary PRU understands the apprehension some carers may feel in raising such concerns and the difficulty that some carers may have if faced with this situation. As such, the school and staff will endeavour to support the carers and the child to ensure the wellbeing of the child is maintained and help and advice is made available.

## 41 Online safety

41.1 Technology is a significant component of many safeguarding and wellbeing issues. Children are at risk of abuse online as well as face to face. In many cases abuse will take place concurrently via online channels and in daily life, Children can also abuse their peers online. This can take the form of abusive, harassing and misogynistic messages, the non-consensual sharing of indecent images, especially around group chats, and the sharing of abusive images and pornography to those who do not wish to receive such content. An effective approach to online safety empowers a school or college to protect and educate the whole school or college community in their use of technology and establishes mechanisms to identify, intervene in, and escalate any incident where appropriate. See Appendix 6 for additional information.

41.2 Leicester City Primary PRU takes online safety and wellbeing of staff and children seriously and all our staff are given online safety training at induction. In addition to this, all staff receive child protection, safeguarding and online safety updates through via email, e bulletins and staff meetings at least annually to provide them with the relevant skills and knowledge to safeguard children effectively. Our approach to online safety is reflected as required in all relevant policies and whilst planning the curriculum, teacher training, the roles and responsibilities of the designated safeguarding lead and any parental engagement.

41.3 The school will consider a whole school approach to online safety. This will include a clear policy on the use of mobile technology in the school. Many children have unlimited and unrestricted access to the internet via 4G and 5G and the school will carefully consider how this



is managed on our premises. The policy will take into consideration the use of all handheld devices and smart watches.

41.1 Staff training – The school will ensure that online safety training for all staff will include monitoring and filtering and is integrated, aligned and considered as part of the overarching safeguarding approach.

## 42 Monitoring and Filtering

42.1 Monitoring and filtering play crucial roles in the responsible use of the internet. With the vast amount of information available online, these tools help ensure a safe and productive online environment. Monitoring involves tracking internet activities to prevent illegal or harmful content, protecting users from cyber threats, and enforcing compliance with policy and guidance. Filtering, on the other hand, enables the customisation of internet access, allowing schools and colleges to block inappropriate content and prioritise educational resources. Both monitoring and filtering are essential in schools, colleges, and homes to safely foster positive internet experience for all users.

42.2 It is the responsibility of our Lead DSL (Nicola Anderson) to ensure online safety and understanding the filtering and monitoring systems and processes in place for Leicester City Primary PRU. Our Lead DSL will also ensure ALL our staff receive appropriate training and understand the expectations, roles and responsibilities in relation to filtering and monitoring which also ties in with Teachers Standards<sup>26</sup> and staff Code of Conduct Policy and our Governing Body will regularly review its effectiveness. (KCSIE Role of DSL and Para 141)

42.3 Our establishment further understands the importance of regular contact with parents and carers. Where appropriate, these communications will be used to reinforce the importance of children being safe online as it is likely that supporting parents and carers will find it helpful to understand what systems we use to filter and monitor online use. It will be especially important for parents and carers to be aware of what their children are being asked to do online, including the sites they will be asked to access and be clear who from the school or college (if anyone) their child is going to be interacting with online. For additional information on monitoring filtering within our establishment, please see Appendix 6 for additional information.

[Meeting digital and technology standards in schools and colleges - Filtering and monitoring standards for schools and colleges - Guidance - GOV.UK \(www.gov.uk\)](#) (Updated Guidance Gov Mar 23)

[Meeting digital and technology standards in schools and colleges - Filtering and monitoring standards for schools and colleges - Guidance - GOV.UK \(www.gov.uk\)](#)

---

<sup>26</sup> [Teachers' Standards guidance \(publishing.service.gov.uk\)](#)



## 43 Use of school or college premises for non-school/college activities

43.1 Where governing bodies or proprietors hire or rent out school or college facilities/premises to organisations or individuals (for example to community groups, sports associations, and service providers to run community or extra-curricular activities) they should ensure that appropriate arrangements are in place to keep children safe.

43.2 When services or activities are provided by the governing body or proprietor, under the direct supervision or management of their school or college staff, their arrangements for child protection will apply. However, where services or activities are provided separately by another body this is not necessarily the case. The governing body or proprietor should therefore seek assurance that the body concerned has appropriate safeguarding and child protection policies and procedures in place (including inspecting these as needed); and ensure that there are arrangements in place to liaise with the school or college on these matters where appropriate. This applies regardless of whether the children who attend any of these services or activities are children on the school roll or attend the college.

43.3 The governing body or proprietor should also ensure safeguarding requirements are included in any transfer of control agreement (i.e., lease or hire agreement), as a condition of use and occupation of the premises; and that failure to comply with this would lead to termination of the agreement.

## 44 What we do when we are concerned about a child

44.1 Where risk factors are present but there is no evidence of a particular risk, then our DSL/SLT advises us on preventative work that can be done within school to engage the student into mainstream activities and social groups. The DSL/SLT may well be the person who talks to and has conversations with the student's family, sharing the school's concern about the young person's vulnerability and how the family and school can work together to reduce the risk.

44.2 In this situation, depending on how worried we are and what we agree with the parent and the young person (as far as possible).

44.3 The DSL can decide to notify Duty and Advice, Early Help or Family Support Services so that a strategic overview can be maintained, and any themes or common factors can be recognised; and

The school will review the situation after taking appropriate action to address the concerns.

44.4 The DSL will also offer and seek advice about undertaking an Early Help assessment and/or making a referral to Early Help services.



44.5 In addition to the above, our School staff will refer to Appendix 5 'Procedure to follow in cases of possible, alleged or suspected abuse, or serious cause for concern about a child' when dealing with a child Disclosure or an allegation of abuse.

## 45 Policy review

The Governing Body of our school will review the Safeguarding and Child Protection Policy annually at the first full Management Committee meeting of the academic year.

## 46 Other Relevant Policies

Leicester City Primary PRU's Governing Body's legal responsibility for safeguarding the welfare of the children goes beyond child protection. Their duty is to ensure that safeguarding permeates all activity and functions. This policy therefore complements and supports a range of other policies, for instance:

- Children's behaviour management, including drug/alcohol use
- Staff behaviour and management (Code of Conduct; Safer Working Practice)
- Parents behaviour and management (Code of conduct when in school)
- Racist incidents and Homophobic Behaviour (LGBTQ)
- Anti-bullying including Child on Child Abuse and Children Using Sexually Abusive behaviour
- Sexual Violence and Sexual Harassment between children in schools and colleges
- Physical Interventions
- Special Educational Needs, Mental Health Issues and Disabled Children
- Trips and visits
- Work experience and work-related learning placements
- First aid and the administration of medicines
- Health and Safety & Site Security
- Sex and Relationship Education/Underage Sexual Activity (Healthy Relationships and Domestic Violence in Young People)
- Equal opportunities
- ICT and E-safety, including on and offline and acceptable usage & handheld devices
- Extended School Activities
- LAC Policy
- Safer Recruitment Policy
- Managing Allegations Procedure / Local Authority Designated Officer (LADO)
- Monitoring, Recording, Retaining Safeguarding Records Guidance
- Whistleblowing Procedures





The above list is not exhaustive and when undertaking development or planning of any kind, Leicester City Primary PRU and our Governors will consider the best interest of our children and any implications for safeguarding children and promoting their welfare.



## 47 Useful contact numbers and links

Nicola Anderson – Headteacher / DSL	0116 208 1470 07377 735761
Zaheera Omar-Davies – Deputy Headteacher	0116 208 1470 07377 449737
Bruce Wells – Chair of Governors	0116 282 4368 0116 208 1470
Sophie Maltby – SEND Governor	0116 454 4650 0116 208 1470
Leicestershire Police	999 / 0116 222 2222
One Front Door Duty & Advice (Inc out of hours) <a href="mailto:das.team@leicester.gov.uk">das.team@leicester.gov.uk</a> Early Help & Support/ <a href="mailto:early-help@leicester.gov.uk">early-help@leicester.gov.uk</a>	0116 454 1004
Children's Safeguarding Unit	0116 454 2440
Safeguarding in Education Julie Chapaneri & Mohammed Patel <a href="mailto:Safeguardingineducation@leicester.gov.uk">Safeguardingineducation@leicester.gov.uk</a>	0116 454 2440
Local Authority Designated Officer (LADO) Jude Atkinson	0116 454 2440
Leicester Safeguarding Childrens Board (LSCPb) <a href="http://www.lcityLSCPb.org/">http://www.lcityLSCPb.org/</a>	0116 454 6520
Prevent (Advice / Referral) City: Ailsa Coull – <a href="mailto:Ailsa.coull@leicester.gov.uk">Ailsa.coull@leicester.gov.uk</a>	01164 546923 07519 069833
UAVA – United against violence and abuse (Domestic Violence, Abuse between Teenagers and Domestic Violence in BME community) <a href="mailto:info@uava.org.uk">info@uava.org.uk</a>	0808 80 200 28
Forced Marriage Unit <a href="mailto:fm@fco.gov.uk">fm@fco.gov.uk</a>	020 7008 0151
Female Genital Mutilation Helpline <a href="mailto:fgmhelp@nscpsc.org">fgmhelp@nscpsc.org</a>	0800 028 3550
NSPCC Whistleblowing Advice Line <a href="mailto:help@nspcc.org.uk">help@nspcc.org.uk</a>	0800 028 0285



## Useful websites and links

[www.thinkuknow.co.uk](http://www.thinkuknow.co.uk)

[www.disrespectnobody.co.uk](http://www.disrespectnobody.co.uk)

[www.saferinternet.org.uk](http://www.saferinternet.org.uk)

[www.internetmatters.org](http://www.internetmatters.org)

[www.pshe-association.org.uk](http://www.pshe-association.org.uk)

[www.educateagainsthate.com](http://www.educateagainsthate.com)

[www.gov.uk/government/publications/the-use-of-social-media-for-online-radicalisation](http://www.gov.uk/government/publications/the-use-of-social-media-for-online-radicalisation)

[Children Forced Into Opening Criminal Bank Accounts | The Children's Society \(childrensociety.org.uk\)](http://childrensociety.org.uk)



## APPENDIX 1 - DEFINITION AND INDICATORS OF ABUSE

Abuse, as outlined in KCSIE 2023, is a form of maltreatment of a child. Somebody may abuse or neglect a child by inflicting harm or by failing to act to prevent harm. Harm can include ill treatment that is not physical as well as the impact of witnessing ill treatment of others. This can be particularly relevant, for example, in relation to the impact on children of all forms of domestic abuse. Children may be abused in a family or in an institutional or community setting by those known to them, or, more rarely, by others. Abuse can take place wholly online, or technology may be used to facilitate offline abuse. Children may be abused by an adult or adults or by another child or children.

### 1. NEGLECT

Neglect is the persistent failure to meet a child's basic physical and/or psychological needs, likely to result in the serious impairment of the child's health or development. Neglect may occur during pregnancy as a result of maternal substance abuse. Once a child is born, neglect may involve a parent or carer failing to:

Provide adequate food, clothing and shelter (including exclusion from home or abandonment);  
Protect a child from physical and emotional harm or danger;  
Ensure adequate supervision (including the use of inadequate care-givers); or  
Ensure access to appropriate medical care or treatment.

It may also include neglect of, or unresponsiveness to, a child's basic emotional needs. The following may be indicators of neglect (this is not designed to be used as a checklist):

- Constant hunger;
- Fabricated or Induced Illnesses (Munchausen Syndrome by Proxy)
- Stealing, scavenging and/or hoarding food;
- Frequent tiredness or listlessness;
- Frequently dirty or unkempt;
- Often poorly or inappropriately clad for the weather;
- Poor school attendance or often late for school;
- Poor concentration;
- Affection or attention seeking behaviour;
- Illnesses or injuries that are left untreated;
- Failure to achieve developmental milestones, for example growth, weight;
- Failure to develop intellectually or socially;
- Responsibility for activity that is not age appropriate such as cooking, ironing, caring for siblings;
- The child is regularly not collected or received from school; or
- The child is left at home alone or with inappropriate carers



Neglect is a priority for Leicester, Leicestershire & Rutland LSCP. Neglect has been identified as a feature in national & local Serious Case Reviews (SCR's), local learning reviews and multi-agency audits. Our local LSCP have developed a Neglect Toolkit to support practitioners identify neglect earlier in families. Key staff members and DSL's in our school are versed with this document and understand when to use it.

<http://www.lcitylscb.org/information-for-practitioners/safeguarding-topics/neglect/>

## 2. PHYSICAL ABUSE

Physical abuse may involve hitting, shaking, throwing, poisoning, burning or scalding, drowning, suffocating or otherwise causing physical harm to a child. Physical harm may also be caused when a parent or carer fabricates the symptoms of, or deliberately induces, illness in a child.

The following may be indicators of physical abuse (this is not designed to be used as a checklist):

- Multiple bruises in clusters, or of uniform shape;
- Bruises that carry an imprint, such as a hand or a belt;
- Bite marks;
- Round burn marks;
- Multiple burn marks and burns on unusual areas of the body such as the back, shoulders or buttocks;
- An injury that is not consistent with the account given;
- Changing or different accounts of how an injury occurred;
- Bald patches;
- Symptoms of drug or alcohol intoxication or poisoning;
- Unaccountable covering of limbs, even in hot weather;
- Fabricated or Induced Illnesses (Munchausen Syndrome by Proxy)
- Fear of going home or parents being contacted;
- Fear of medical help;
- Fear of changing for PE;
- Inexplicable fear of adults or over-compliance;
- Violence or aggression towards others including bullying; or
- Isolation from peers.

## 3. SEXUAL ABUSE

Sexual abuse involves forcing or enticing a child or young person to take part in sexual activities, not necessarily involving a high level of violence, whether or not the child is aware of what is happening. The activities may involve physical contact, including assault by penetration (for example, rape or oral sex) or non-penetrative acts such as masturbation, kissing, rubbing and touching outside of clothing. They may also include non-contact activities, such as involving children in looking at, or in the production of, sexual images, watching sexual activities, encouraging children to behave in sexually inappropriate ways, or grooming a child in preparation



for abuse (including via the internet). Sexual abuse is not solely perpetrated by adult males. Women can also commit act of sexual abuse, as can other children.

The following may be indicators of sexual abuse (this is not designed to be used as a checklist):

- Sexually explicit play or behaviour or age-inappropriate knowledge;
- Anal or vaginal discharge, soreness or scratching;
- Reluctance to go home;
- Inability to concentrate, tiredness;
- Refusal to communicate;
- Thrush, persistent complaints of stomach disorders or pains;
- Eating disorders, for example anorexia nervosa and bulimia;
- Attention seeking behaviour, self-mutilation, substance abuse;
- Aggressive behaviour including sexual harassment or molestation;
- Unusual compliance;
- Regressive behaviour, enuresis, soiling;
- Frequent or open masturbation, touching others inappropriately;
- Depression, withdrawal, isolation from peer group;
- Reluctance to undress for PE or swimming; or
- Bruises or scratches in the genital area.

### **3a. SEXUAL EXPLOITATION**

Child sexual exploitation occurs when a child or young person, or another person, receives “something” (for example food, accommodation, drugs, alcohol, cigarettes, affection, gifts, money) as a result of the child/young person performing sexual activities, or another person performing sexual activities on the child/young person. Sexual Exploitation can also include Grooming and Sexting.

The presence of any significant indicator for sexual exploitation should trigger a referral to children’s social care. The significant indicators are: (no an exhaustive list)

- Having a relationship of concern with a controlling adult or young person (this may involve physical and/or emotional abuse and/or gang activity);
- Entering and/or leaving vehicles driven by unknown adults;
- Possessing unexplained amounts of money, expensive clothes or other items;
- Frequenting areas known for risky activities;
- Being groomed or abused via the Internet and mobile technology; and
- Having unexplained contact with hotels, taxi companies or fast food outlets.

### **4. EMOTIONAL ABUSE**

Emotional abuse is the persistent emotional maltreatment of a child such as to cause severe and persistent adverse effects on the child's emotional development. It may involve conveying to children that they are worthless or unloved, inadequate, or valued only insofar as they meet the



needs of another person. It may include not giving the child opportunities to express their views, deliberately silencing them or 'making fun' of what they say or how they communicate. It may feature age or developmentally inappropriate expectations being imposed on children. These may include interactions that are beyond the child's developmental capability, as well as overprotection and limitation of exploration and learning, or preventing the child participating in normal social interaction. It may also involve seeing or hearing the ill-treatment of another person. It may involve serious bullying (including cyber bullying), causing children frequently to feel frightened or in danger, or the exploitation or corruption of children. Some level of emotional abuse is involved in all types of maltreatment. The following may be indicators of emotional abuse (this is not designed to be used as a checklist):

- The child consistently describes him/herself in very negative ways – as stupid, naughty, hopeless, ugly;
- Over-reaction to mistakes;
- Delayed physical, mental or emotional development;
- Sudden speech or sensory disorders;
- Inappropriate emotional responses, fantasies;
- Neurotic behaviour: rocking, banging head, regression, tics and twitches;
- Self-harming, drug or solvent abuse;
- Fear of parents being contacted;
- Running away;
- Compulsive stealing;
- Appetite disorders - anorexia nervosa, bulimia; or
- Soiling, smearing faeces, enuresis.

N.B.: Some situations where children stop communication suddenly (known as “traumatic mutism”) can indicate maltreatment

## 5. SEXUAL VIOLENCE AND SEXUAL HARASSMENT<sup>27</sup>

### Sexual violence

It is important that school and college staff are aware of sexual violence and the fact children can, and sometimes do, abuse their peers in this way. When referring to sexual violence we are referring to sexual offences under the Sexual Offences Act 2003<sup>105</sup> as described below:

**Rape:** A person (A) commits an offence of rape if: he intentionally penetrates the vagina, anus or mouth of another person (B) with his penis, B does not consent to the penetration and A does not reasonably believe that B consents.

**Assault by Penetration:** A person (A) commits an offence if: s/he intentionally penetrates the vagina or anus of another person (B) with a part of her/his body or anything else, the penetration is sexual, B does not consent to the penetration and A does not reasonably believe that B consents.

<sup>27</sup>[https://assets.publishing.service.gov.uk/government/uploads/system/uploads/attachment\\_data/file/1021914/KCSIE\\_2021\\_September\\_guidance.pdf](https://assets.publishing.service.gov.uk/government/uploads/system/uploads/attachment_data/file/1021914/KCSIE_2021_September_guidance.pdf) - Part 5



**Sexual Assault:** A person (A) commits an offence of sexual assault if: s/he intentionally touches another person (B), the touching is sexual, B does not consent to the touching and A does not reasonably believe that B consents.

**What is consent?** Consent is about having the freedom and capacity to choose. Consent to sexual activity may be given to one sort of sexual activity but not another, e.g. to vaginal but not anal sex or penetration with conditions, such as wearing a condom. Consent can be withdrawn at any time during sexual activity and each time activity occurs. Someone consents to vaginal, anal or oral penetration only if s/he agrees by choice to that penetration and has the freedom and capacity to make that choice.

## **Sexual harassment**

When referring to sexual harassment we mean 'unwanted conduct of a sexual nature' that can occur online and offline. When we reference sexual harassment, we do so in the context of child on child sexual harassment. Sexual harassment is likely to: violate a child's dignity, and/or make them feel intimidated, degraded or humiliated and/or create a hostile, offensive or sexualised environment.

Whilst not intended to be an exhaustive list, sexual harassment can include:

- sexual comments, such as: telling sexual stories, making lewd comments, making sexual remarks about clothes and appearance and calling someone sexualised names;
- Sexual "jokes" or taunting;
- Physical behaviour, such as: deliberately brushing against someone, interfering with someone's clothes (schools and colleges should be considering when any of this crosses a line into sexual violence - it is important to talk to and consider the experience of the victim) and displaying pictures, photos or drawings of a sexual nature; and
- Online sexual harassment. This may be standalone, or part of a wider pattern of sexual harassment and/or sexual violence. It may include:
  - Non-consensual sharing of sexual images and videos;
  - Sexualised online bullying;
  - Unwanted sexual comments and messages, including, on social media; and
  - Sexual exploitation; coercion and threats

## **The response to a report of sexual violence or sexual harassment**

The initial response to a report from a child is important. It is essential that all victims are reassured that they are being taken seriously and that they will be supported and kept safe. A victim should never be given the impression that they are creating a problem by reporting sexual violence or sexual harassment. Nor should a victim ever be made to feel ashamed for making a report.





## 6. RESPONSES FROM PARENTS

Research and experience indicates that the following responses from parents may suggest a cause for concern across all four categories:

- Delay in seeking treatment that is obviously needed;
- Unawareness or denial of any injury, pain or loss of function (for example, a fractured limb);
- Incompatible explanations offered, several different explanations or the child is said to have acted in a way that is inappropriate to her/his age and development;
- Reluctance to give information or failure to mention other known relevant injuries;
- Frequent presentation of minor injuries;
- A persistently negative attitude towards the child;
- Unrealistic expectations or constant complaints about the child;
- Alcohol misuse or other drug/substance misuse;
- Severe chastisement of a child including withholding food and using food as a form of punishment;
- Parents request removal of the child from home; or
- Violence between adults in the household.

## 7. SEND CHILDREN (Special Educational Needs and Disabilities)

Leicester City Primary PRU is an inclusive school and welcomes all pupils including those with SEND. We believe in providing every possible opportunity to enable our pupils to develop their full potential whilst promoting their self-esteem and valuing their individuality.

Some children have barriers to learning that mean they have special needs and require particular action by the school. Our dedicated SENCO and teachers take account of these requirements and make provision, where necessary, to support individuals or groups of children and thus enable them to participate effectively in curriculum and assessment activities.

### **Key issues for safeguarding children with disabilities include:**

- Social isolation
- Reliance on others for personal care
- Impaired capacity to resist or report abusive behaviour
- Reduced access to someone to tell
- Especially vulnerable to bullying and intimidation
- More frequently away from home, eg. in hospital, respite care or residential living

Our SENCO and teachers have attended appropriate training as part of their CPD; whole school safeguarding training, understand the vulnerability of SEND children and understand that SEND children may be at higher risk of abuse or neglect.

### **Some indicators concerns could include:**



- A bruise in a site that might not be of concern on an ambulant child, such as the shin, might be of concern on a non-mobile child
- Not getting enough help with feeding leading to malnourishment
- Poor toileting arrangements
- Lack of stimulation
- Unjustified and/or excessive use of restraint
- Rough handling, extreme behaviour modification e.g. deprivation of liquid, medication, food or clothing
- Unwillingness to try to learn a child's means of communication
- Ill-fitting equipment e.g. callipers, sleep boards, inappropriate splinting; misappropriation of a child's finances
- Invasive procedures which are unnecessary or are carried out against the child's will
- A lack of knowledge about the impact of disability on the child
- A lack of knowledge about the child, e.g. not knowing the child's usual behaviour
- Not being able to understand the child's method of communication
- Confusing behaviours that may indicate the child is being abused with those associated with the child's disability
- Denial of the child's sexuality
- Behaviour, including sexually harmful behaviour or self-injury may be indicative of abuse
- Being aware that certain health/medical complications may influence the way symptoms present or are interpreted.

Leicester City Primary PRU has a specific SEND Policy. All our staff have access to this policy and key staff members are also aware of the LSCP Procedures<sup>28</sup> on line. As best practice our school will ensure we:

- Provide starting points for the development of an appropriate curriculum
- Identify and focus attention on action to support the child within the class
- Use the assessment processes to identify any learning difficulties
- Ensure ongoing observation and assessments provide regular feedback about the child's achievements and experiences to form the basis for planning the next steps of the child's learning
- Help disabled children make their wishes and feelings known in respect of their care and treatment;
- Ensure that disabled children receive appropriate personal, health, and social education (including sex education);
- Make sure that all disabled children know how to raise concerns, and giving them access to a range of adults with whom they can communicate.
- Those disabled children with communication impairments should have available to them at all times a means of being heard;
- Close contact with families, and a culture of openness on the part of services;

---

<sup>28</sup> <http://www.lcitylscb.org/information-for-practitioners/safeguarding-topics/neglect/>



- Guidelines and training for staff on good practice in intimate care; handling difficult behaviour; consent to treatment; anti-bullying strategies; and sexuality and sexual behaviour among young people;
- Guidelines and training for staff working with disabled children aged 16 and over to ensure that decisions about disabled children who lack capacity will be governed by the Mental Health Capacity Act once they reach the age of 16.
- Use specialist service needs/multi-agency approach if as a school we feel additional, support resources and interventions are required.



## APPENDIX 2 - PROCEDURE TO FOLLOW IN CASES OF POSSIBLE, ALLEGED OR SUSPECTED ABUSE, OR SERIOUS CAUSE FOR CONCERN ABOUT A CHILD: FOR ALL STAFF MEMBERS

Teachers are in a unique position to identify and help children who may be being abused. Although all schools are required to have a named designated teacher with responsibility for co-ordinating child protection, this should not diminish the role all teachers have in protecting children. Child abuse usually comes to the attention of teachers in one of four ways:

- a direct allegation from the child being abused,
- a third party (e.g. friend, classmate) report,
- through the child's behaviour
- or through observation of an injury to the child.

When a child makes a disclosure, or when concerns are received from other sources, do not investigate, ask leading questions, examine children, or promise confidentiality. You may ask questions of a clarifying nature – such as 'who, what, where, when, how?' or use the acronym TED – 'Tell me, 'Explain it to me', Describe it to me.'

Remember, the way in which you talk to the child may have an effect on any subsequent legal proceedings. You need to be open and non-judgemental. Children making disclosures should be reassured and, if possible at this stage, should be informed what action will be taken next.

As soon as possible write a dated and timed note of what has been disclosed or noticed, said or done and report to the Designated Safeguarding Lead (DSL). It is important to act swiftly to avoid delays.

As a general guide, it is important to remember the following:

**SECRETS** - A child's trust can place a heavy responsibility on teachers, particularly if they want the abuse to remain a secret. You should tell the child that if he or she is being hurt you will need to tell other people. The child may need to be reassured that you will only speak to those who need to know and that they will treat the matter confidentially.

**LISTEN** - Listen carefully to the child. Take what he or she says seriously as it is rare for a child to make entirely false allegations.

**REASSURE** - Reassure the child that he or she was right to tell and is not to blame for what happened, but do not promise confidentiality.

**RECORD** - As soon as possible after talking with the child, make a written record of what was said at the time, when and where the conversation took place and who was present. This must be accurate and not interpretation or assumption. Note any colloquial/slang words used by students and any language/behaviour inappropriate for the child's age – do not convert them into



proper terms. Remember this may be used in any subsequent legal proceedings so note down too, how the child was behaving and the way in which they told you what was happening. This may indicate how the child was feeling.

For injuries in specific areas, record the location accurately – DO NOT take photographs or examine the child yourself.

**SUPPORT** - Get support for yourself. Listening to abused children can be very upsetting, and giving the child help may be difficult, if you are not given support yourself. Experience of working with children is not, in itself, preparation for the distress abuse can raise.

**REMEMBER** - It takes courage and determination for a child to tell an adult that they are being, or have been, abused. When they do tell someone, it is usually a person who they feel they can trust and whom they feel is reliable. For reasons of confidentiality, only those people who need to know about the abuse should be told, and conversations about the child should always be held in private.

If the concern involves the conduct of a member of staff or volunteer, a visitor, a governor, a trainee or another young person or child, the DSL/Headteacher must be informed asap; if the concern is in reaction to your Headteacher, you must speak to your Governor. If you feel you cannot speak with your Governors, you must use your whistleblowing procedure and contact Duty & Advice/LADO for advice and support. (Appendix 6)

**NB** It is not education staff's role to seek disclosures. Their role is to observe that something may be wrong, ask about it, listen, be available and try to make time to talk.



## APPENDIX 3 - GUIDELINES FOR AVOIDING ALLEGATIONS OF ABUSE: FOR ALL STAFF MEMBERS

Whilst they may in common law be regarded as acting in loco parentis, teachers and carers in school should remember that they are not able to take the place of parents in providing physical comfort. This is not to say that all physical contact is inappropriate, rather that the professional context demands circumspection and a sense of fitness for purpose.

Teachers of very young children of nursery and Key stage 1 age will naturally need to engage in more physical contact than teachers of older children. Comforting a distressed child who may just have started school will not be an unusual occurrence. Similarly, in the special school setting, some children may tend towards demanding physical attention. In such circumstances, the contact by the adult will be for re-assurance and may involve physical closeness (e.g. holding the child's hand or placing hands on the child's shoulders). Hugging and kissing would be inappropriate for other than the parent, even though the child may want to initiate it.

Administration of medicines and first aid requires careful codes of conduct and procedures. These should be laid down by local authority or health authority or in individual school guidelines and followed meticulously. As a rule of thumb, teachers should not administer medicines. If the child had an adverse reaction to a medicine given by a teacher, the teacher could be held liable and charged with negligence.

Administration of first aid should be undertaken by a qualified first aider. Where none is available, the minimum steps should be taken to ensure the child's safety and the emergency services should be called.

Teachers may sometimes be called upon to intervene physically if a child or children are in danger of injuring themselves or others - as in a fight in the school yard. It is important that in such circumstances the minimum possible reasonable force is used. Where possible another colleague should be called upon to assist, both to minimise the risk of injury to the teacher intervening and to act as witness that reasonable force and no more was used. After such an event a clear record of what took place should be made, including where possible statements from witnesses. The Headteacher should be informed.

One-to-one situations with pupils need to be carefully and consciously managed. Some teaching, as with peripatetic music staff, may often suggest one-to-one organisation. Where pupils can be paired for such lessons, it is preferable. Where this is not possible and in other situations of individual interviews with pupils, it is advisable to use a room with a window where others can see in or to leave the door open. If confidentiality makes this difficult, then another member of staff should be informed that the interview is taking place.

If a child becomes distressed, support and re-assurance should be offered through calming words rather than through physical contact. Teachers should not become involved with children's



personal problems beyond listening and being sensitive to them in order to refer the child to the most appropriate source of help or counselling.



## APPENDIX 4 - INDICATORS OF VULNERABILITY TO RADICALISATION

1. Radicalisation refers to the process by which a person comes to support terrorism and forms of extremism leading to terrorism.
2. Extremism is defined by the Government in the Prevent Strategy as:

Vocal or active opposition to fundamental values, including democracy, the rule of law, individual liberty and mutual respect and tolerance of different faiths and beliefs. We also include in our definition of extremism calls for the death of members of our armed forces, whether in this country or overseas.

3. Extremism is defined by the Crown Prosecution Service as:

The demonstration of unacceptable behaviour by using any means or medium to express views which:

- Encourage, justify or glorify terrorist violence in furtherance of particular beliefs;
  - Seek to provoke others to terrorist acts;
  - Encourage other serious criminal activity or seek to provoke others to serious criminal acts; or
  - Foster hatred which might lead to inter-community violence in the UK.
4. There is no such thing as a “typical extremist”: those who become involved in extremist actions come from a range of backgrounds and experiences, and most individuals, even those who hold radical views, do not become involved in violent extremist activity.
  5. Students may become susceptible to radicalisation through a range of social, personal and environmental factors - it is known that violent extremists exploit vulnerabilities in individuals to drive a wedge between them and their families and communities. It is vital that school staff are able to recognise those vulnerabilities.
  6. Indicators of vulnerability include:
    - Identity Crisis – the student is distanced from their cultural / religious heritage and experiences discomfort about their place in society;
    - Personal Crisis – the student may be experiencing family tensions; a sense of isolation; and low self-esteem; they may have dissociated from their existing friendship group and become involved with a new and different group of friends; they may be searching for answers to questions about identity, faith and belonging;
    - Personal Circumstances – migration; local community tensions; and events affecting the student’s country or region of origin may contribute to a sense of grievance that is triggered by personal experience of racism or discrimination or aspects of Government policy;





- Unmet Aspirations – the student may have perceptions of injustice; a feeling of failure; rejection of civic life;
  - Experiences of Criminality – which may include involvement with criminal groups, imprisonment, and poor resettlement/reintegration; and
  - Special Educational Need – students may experience difficulties with social interaction, empathy with others, understanding the consequences of their actions and awareness of the motivations of others.
7. However, this list is not exhaustive, nor does it mean that all young people experiencing the above are at risk of radicalisation for the purposes of violent extremism.
8. More critical risk factors could include:
- Being in contact with extremist recruiters;
  - Accessing violent extremist websites, especially those with a social networking element;
  - Possessing or accessing violent extremist literature;
  - Using extremist narratives and a global ideology to explain personal disadvantage;
  - Justifying the use of violence to solve societal issues; and
  - Joining or seeking to join extremist organisations; and
  - Significant changes to appearance and/or behaviour;
  - Experiencing a high level of social isolation resulting in issues of identity crisis and/or personal crisis



# LEICESTER CITY PRIMARY PRU Whistleblowing Policy

## Reporting illegal or improper conduct

(Disclosures under the Public Interest Disclosures Act  
1998)

or concerns about safeguarding children & young  
people



This Whistleblowing Policy is adopted from the Leicester City Council extranet.

## Introduction

Leicester City Council is committed to conducting its business with honesty and integrity and it expects all staff to maintain high standards of conduct. All organisations, however, face the risk of things going wrong from time to time, or of unknowingly harbouring illegal or unethical conduct. A culture of openness and accountability is essential in order to prevent such situations occurring or to address them when they do occur.

The aims of the Whistleblowing Policy are:

- To encourage staff to report suspected wrongdoing as soon as is possible, in the knowledge that their concerns will be taken seriously and investigated as appropriate and that their confidentiality will be respected.
- To provide staff with guidance as to how to raise those concerns.
- To reassure staff that they should be able to raise genuine concerns in good faith without fear of reprisals, even if they turn out to be mistaken.

This policy aims to explain what constitutes a whistleblowing complaint, how to raise one, how it will be dealt with and what protection is afforded to a legitimate whistleblower.

## Scope

This Whistleblowing Policy applies to individuals working at all levels within the Primary PRU. The Headteacher, Senior Leadership Team, employees, part-time and fixed-term workers, casual and agency staff (and volunteers) (collectively referred to as **staff** in this policy).

## What is Whistleblowing?

**Whistleblowing** is the disclosure of information which relates to suspected wrongdoing or dangers at work. This may include:

- criminal activity,
- miscarriages of justice,
- danger to health and safety,
- damage to the environment,
- failure to comply with any legal obligation or regulatory requirements,
- bribery,
- financial fraud or mismanagement,
- negligence,
- the deliberate concealment of any of the above matters.



A **whistleblower** is a person who raises a genuine concern in good faith relating to any of the above. If you have genuine concerns related to suspected wrongdoing or danger affecting any of the PRU's activities (a **whistleblowing concern**) you should report it under this policy.

## Whistleblowing is NOT

This policy should not be used for the following:

- Raising concerns that relate to your own personal circumstances such as the way you have been treated at work. Such concerns should be raised in the first instance informally with the Headteacher who will attempt to resolve them for you. If no resolution is possible, the Grievance procedure, (or other appropriate procedure such as the 'Harassment and Discrimination procedure') should be used for this purpose.
- Raising concerns of a serious nature which do not fall within the definitions set out above. The Grievance procedure, or other procedure as appropriate, should be used for this purpose.
- Raising concerns as a member of the public. The Corporate complaints procedure should be used for this purpose.
- Raising concerns about Councillors. The Member Code of Conduct and Arrangements should be used for this purpose.

If you are uncertain whether something is within the scope of this policy you should seek advice from Human Resources.

## Raising a whistleblowing concern

We hope that in many cases you will be able to raise any concerns with the Headteacher. You may tell them in person or put the matter in writing if you prefer. They may be able to agree a way of resolving your concern quickly and effectively. Where you do not feel you can do this then you should raise your concern with a member of the Management Committee. In all cases the Headteacher will log the referral with the Chair of the Management Committee so that it can be recorded as a 'whistleblowing complaint'.

Where the matter is more serious, or you feel that the Headteacher has not addressed your concern or you prefer not to raise it with them for any reason, you should raise your concern directly with the Chair of the Management Committee. Should the Chair consider that your concern should not have been raised with them because

1. the allegation can be properly dealt with by the Headteacher and/or
2. your identity does not need protecting



they will discuss their view with you. Consequently, your referral may be redirected to the Headteacher. In any event it is most likely that the Chair of the Management Committee in dealing with your concern will liaise with the Headteacher regarding its progression. If you are in any doubt you can seek advice from Public Concern at Work, the independent whistleblowing charity, who offer a confidential helpline. Their contact details are at the end of this policy.

## Confidentiality

It is hoped that staff will feel able to voice whistleblowing concerns openly under this policy. If, however, you want to raise your concern confidentially, every effort will be made to keep your identity confidential. In these circumstances and if it is necessary for anyone investigating or involved generally in your concern to know your identity, this will be discussed with you prior to your identity being disclosed.

Anonymous disclosures are not encouraged. Proper investigation may be more difficult or impossible if further information cannot be obtained from you. It is also more difficult to establish whether any allegations are credible and have been made in good faith. Whistleblowers who are concerned about possible reprisals if their identity is revealed should raise this at the time that they make their disclosure and appropriate measures can then be taken. If you are in any doubt you can seek advice from Public Concern at Work, the independent whistleblowing charity, who offer a confidential helpline. Their contact details are at the end of this policy.

## External Disclosures

The aim of this policy is to provide an internal mechanism for reporting, investigating and remedying any wrongdoing in the workplace. In most cases you should not find it necessary to alert anyone externally.

The law recognises that in some circumstances it may be appropriate for you to report your concerns to an external body such as a regulator. It will very rarely, if ever, be appropriate to alert the media. We strongly encourage you to seek advice before reporting a concern externally. The independent whistleblowing charity, Public Concern at Work, operates a confidential helpline. They also have a list of prescribed regulators for reporting certain types of concern.

Whistleblowing concerns usually relate to the conduct of staff, but they may sometimes relate to the actions of a third party, such as a contractor. The law allows you to raise a concern in good faith with a third party, where you reasonably believe it relates mainly to their actions or something that is legally their responsibility. You are encouraged, however, to report such concerns internally in line with the procedure outlined above.



## Investigation and Outcome

Once you have raised a concern, an initial assessment will be undertaken to determine what, if any, steps should be taken. As part of this process, whether your concern falls within the scope of this policy will be considered. You will be informed of the outcome of the assessment. You may be required to attend meetings in order to provide further information.

Following the initial assessment an investigation may be undertaken. It may be appropriate for the Headteacher or someone else to undertake the investigation. Questions of potential conflict of interest will be considered in determining the appropriateness or otherwise of any particular person carrying out an investigation. Where a potential or actual conflict of interests exists for a particular person they should not carry out the investigation. In exceptional circumstances or where specific expertise is required, an external investigator may be appointed.

It may be appropriate to instigate a further procedure following the conclusion of any investigation, such as the disciplinary procedure. Such action falls outside the scope of this policy.

Whilst in most circumstances you will be kept informed of the progress of any investigation and its likely timescale, the need for confidentiality may prevent the provision of information to you, including specific details of the investigation or any disciplinary action taken as a result. The investigator will decide what details, if any, should be provided to you regarding the investigation itself and its outcome. You should, however, treat any information about the investigation provided to you as confidential.

If it is concluded that a whistleblower has made false allegations maliciously, in bad faith (ie not merely mistaken) or with a view to personal gain, the disciplinary procedure will be followed in respect of that complaint.

## Protection and Support for Whistleblowers

It is understandable that whistleblowers are sometimes worried about possible repercussions. The Primary PRU and Leicester City Council aims to encourage openness and will support staff who raise genuine concerns in good faith under this policy, even if they turn out to be mistaken.

Staff must not suffer any detrimental treatment as a result of raising a concern in good faith. Detrimental treatment includes dismissal, disciplinary action, threats or other unfavourable treatment connected with raising a concern. If you believe that you have suffered any such treatment, you should inform the Headteacher or HR immediately who will assess what steps, if any, should be taken. If for any reason you do not believe it is appropriate to raise this with your Headteacher you should inform the Management Committee. If the matter is not resolved to your satisfaction you may raise this using the Grievance Procedure.



Staff must not threaten or retaliate against whistleblowers in any way. Anyone involved in such conduct will be subject to disciplinary action.

### Responsibility for the success of this policy

The Management Committee has overall responsibility for this policy and for reviewing the effectiveness of actions taken in response to concerns raised under this policy.

The Management Committee has day-to-day operational responsibility for this policy and must ensure that all managers and other staff who may deal with concerns or investigations under this policy receive regular and appropriate training.

The Management Committee should review this policy from a legal and operational perspective at least once a year. Trade unions will be consulted before any changes are made.

<b>Public Concern at Work</b> (Independent whistleblowing charity)	<b>Helpline</b> : (020)7404 6609 <b>email</b> : <a href="mailto:whistle@pcaw.co.uk">whistle@pcaw.co.uk</a> <b>Website</b> : <a href="http://www.pcaw.co.uk">www.pcaw.co.uk</a>
---	--



## APPENDIX 6 – MONITORING AND FILTERING, ONLINE SAFETY & CYBER CRIME – ADDITIONAL INFORMATION

It is essential that children are safeguarded from potentially harmful and inappropriate online material. An effective whole school and college approach to online safety empowers a school or college to protect and educate pupils, students, and staff in their use of technology and establishes mechanisms to identify, intervene in, and escalate any concerns where appropriate. The breadth of issues classified within online safety is considerable and ever evolving, but can be categorised into four areas of risk:

**Content:** being exposed to illegal, inappropriate, or harmful content, for example: pornography, fake news, racism, misogyny, self-harm, suicide, anti-Semitism, radicalisation, and extremism.

**Contact:** being subjected to harmful online interaction with other users; for example: peer to peer pressure, commercial advertising and adults posing as children or young adults with the intention to groom or exploit them for sexual, criminal, financial or other purposes.

**Conduct:** online behaviour that increases the likelihood of, or causes, harm; for example, making, sending and receiving explicit images (e.g., consensual and non-consensual sharing of nudes and semi-nudes and/or pornography, sharing other explicit images and online bullying, and

**Commerce:** risks such as online gambling, inappropriate advertising, phishing and or financial scams. If you feel your pupils, students or staff are at risk, please report it to the Anti-Phishing Working Group (<https://apwg.org/>).

Our school already has an Online Safety Policy in place which can be accessed on the school website and our approach to online safety and monitoring and filtering is reflected within our Child Protection and Safeguarding Policy, section 41.

In order to meet the duties set out in KCSIE 2023, Paragraph 141, Leicester City Primary PRU follows the Department for Education's<sup>29</sup> filtering and monitoring standards where we will;

- Identify and assign roles and responsibilities to manage filtering and monitoring systems.
- Review filtering and monitoring provision at least annually.
- Block harmful and inappropriate content without unreasonably impacting teaching and learning.
- Have effective monitoring strategies in place that meet our high safeguarding needs.

---

<sup>29</sup> [Meeting digital and technology standards in schools and colleges - Filtering and monitoring standards for schools and colleges - Guidance - GOV.UK \(www.gov.uk\)](https://www.gov.uk/guidance/meeting-digital-and-technology-standards-in-schools-and-colleges-filtering-and-monitoring-standards-for-schools-and-colleges)





Our Governing will review the standards and discuss with IT staff, SLT, Lead DSL and service providers what more needs to be done (if anything) to support us to meet the standard set out by the DfE including in part, the risk assessment required by the Prevent Duty. <https://www.gov.uk/government/publications/protecting-children-from-radicalisation-the-prevent-duty>

### **Additional resources:**

Safer Internet Centre: “appropriate” filtering and monitoring. [Appropriate Filtering and Monitoring - UK Safer Internet Centre](#) South West Grid for Learning ([Safety and Security Online | SWGfL](#)) tool to check relevant filtering lists (CSA content, Sexual Content, Terrorist content, Your Internet Connection Blocks Child Abuse & Terrorist Content).

### **Cybercrime**

Cybercrime is criminal activity committed using computers and/or the internet. It is broadly categorised as either ‘cyber-enabled’ (crimes that can happen off-line but are enabled at scale and at speed on-line) or ‘cyber dependent’ (crimes that can be committed only by using a computer). Cyber-dependent crimes include:

- Unauthorised access to computers (illegal ‘hacking’), for example accessing a school’s computer network to look for test paper answers or change grades awarded.
- ‘Denial of Service’ (Dos or DDoS) attacks or ‘booting’. These are attempts to make a computer, network or website unavailable by overwhelming it with internet traffic from multiple sources, and,
- Making, supplying or obtaining malware (malicious software) such as viruses, spyware, ransomware, botnets and Remote Access Trojans with the intent to commit further offence, including those above.

Children with particular skills and interest in computing and technology may inadvertently or deliberately stray into cyber-dependent crime. If there are concerns about a child in this area at Leicester City Primary PRU, our Lead DSL/DSL’s will consider referring into the Cyber Choices programme. This is a nationwide police programme supported by the Home Office and led by the National Crime Agency, working with regional and local policing. It aims to intervene where young people are at risk of committing, or being drawn into, low-level cyber-dependent offences and divert them to a more positive use of their skills and interests.

**Note** Cyber Choices does not currently cover ‘cyber-enabled’ crime such as fraud, purchasing of illegal drugs on-line and child sexual abuse and exploitation, nor other areas of concern such as on-line bullying or general on-line safety. Where such cases arise in our school/college and a crime is possibly being committed, our school will follow our safeguarding procedures and contact the Police and relevant agencies where appropriate. Additional information can be found at: national Crime agency: [Cyber Choices - National Crime Agency](#) and [National Cyber Security Centre - NCSC.GOV.UK](#)



## Remote Education<sup>30</sup>

Government Guidance - Safeguarding children and teachers online: Keeping children and teachers safe during remote education is essential. Our teachers when delivering remote education online are aware that the same principles set out in our school/college staff behaviour policy/code of conduct will apply. There are times where remote learning, virtual lessons, live streaming and recorded videos may be applied within our school and where children are asked to complete tasks and assignments independently. Where this is the case, our establishment, in line with our Online Safety Policy and CP Safeguarding Policy will ensure our online education is safe for both teachers and children.

As a school/college when organising live lessons or recording lessons we will, as a minimum endeavour to:

- use neutral or plain backgrounds.
- ensure appropriate privacy settings are in place.
- ensure staff understand and know how to set up and apply controls relating to pupil and student interactions, including microphones and cameras.
- set up lessons with password protection and ensure passwords are kept securely and not shared.
- ensure all staff, children, students, parents and carers have a clear understanding of expectations around behaviour and participation.

## Important conversations with parents, carers and children

Our school/college pride ourselves in communicating regularly and supporting parents and carers with their child's education. In our communications with parents/carers, we will highlight the importance of their child's online safety in today's digital age. We will support parents/carers to teach their children about the potential risks of the internet and the importance of privacy; to set clear boundaries and guidelines for internet usage, regularly monitor their online activities and keeping any passwords and credentials safe. We will support parents/carers to encourage open communication, so they feel comfortable sharing any concerns. We will highlight to parents the importance of utilising parental controls and safety tools to protect their child from harmful content online. By being involved and informed, we will create a safer online environment for our children both in and out of school/college.

We understand it is especially important for parents and carers to be aware of what their children are being asked to do, including:

- sites they will be asked to use.
- school staff their child will interact with

---

<sup>30</sup> [Safeguarding and remote education - GOV.UK \(www.gov.uk\)](https://www.gov.uk)